

2026

Site Monster 26.0 User Manual



Pacific Software Publishing, Inc.

Index

1. General Information.....	2
Site Monster 26.0 Features.....	2
PC Requirements.....	3
For More Support.....	3
2. Install.....	4
Site Monster 26.0 Installation Procedure.....	4
First Time Log-in Password.....	5
3. Quick Start.....	6
4. Settings Menu.....	10
Email Set Up.....	10
Message Set Up.....	11
Scan Setup.....	12
Log Setup.....	12
Alert Sound Setup.....	13
5. Host List Page.....	15
6. Host View Page.....	20
Scan List.....	21
History Graphs.....	22
Edit Host Profile.....	24
Edit Scan Schedules.....	25
Note for Custom Scans.....	27
How to Set up SNMP Service on Windows PC.....	28
7. History Page.....	30
8. Monitor Page.....	31
About Error Codes.....	33

1. General Information

Site Monster 26.0 Features

Web Interface

- ☒ Runs on Windows PC, Accessible from web browsers.
- ☒ PC Requirement: IIS 10 or above plus ASP.NET, .NET Framework 4.8.1 or above.

Multi-User Support

- ☒ Administrator: All scan features plus control over all users.
- ☒ Users: All scan features.
- ☒ Each user can stop/start his scans. Administrators can stop/start all users' scans at once.
- ☒ Administrators can add/delete users and can login to the user's page.
- ☒ Administrator receives confirmation email on add/deletion of the users and any user password changes.

Automated Scan Monitor Page

- ☒ Auto update on scan status every minute.
- ☒ Warning sound on server down. Sound files can be uploaded to the server.
- ☒ Server down Aware Flag: When Aware flag is set, it stops warning sound.

Customizable Scan Schedules

- ☒ Common Scans: Ping, TCP/UDP Port, HTTP, HTTPS, FTP, SMTP, POP, IMAP, SNMP
- ☒ HTTP(S) Page Download Scan: Authentication check, String Match, Regular Expression Match, Server Status Reply Match, and Redirection Limit.
- ☒ FTP Write/Read/Delete Scan.
- ☒ POP/IMAP Email Send and Receive Scan.
- ☒ SNMP Scans: CPU, Memory, Disk, and Traffic Scans are Pre-Defined.
- ☒ Custom SNMP Scans: Users can set custom SNMP Scan with String Match or Numeric Value Check.

- ❑ MySQL Scan: Login MySQL server and run show tables command.
- ❑ Custom Scans: Upload Executable File/Script on the server and to do String Match or Numeric Value Check on the return value.

Event Actions

- ❑ Not only Emails: On server down and recovery, run programs and/or send web queries.
- ❑ Upload programs to run on the events to the server.
- ❑ Alert/Recover Emails: Customizable for each scan.

Scan History and Logs

- ❑ Scan Logs: Set Preservation days. Download from the web page.
- ❑ History Graph: Set Preservation days. See the History Graph of scans on the web page.

Host List

- ❑ Add/Delete scans of the same host at once.
- ❑ Auto-Detect Hosts: Find hosts from defined IP-Range, and add hosts detected automatically.
- ❑ Host Group Sync: Copy Scan schedule of one host to multiple hosts.

PC Requirements

System: IIS 10 or above plus ASP.NET, .NET Framework 4.8.1 or above. Windows 11 or Later.

Minimum Recommended Resources: 2GHz+ CPU & 1GB+ RAM

- ❑ For the best performance, dedicate one server to Site Monster. If other programs are running on the same machine, this may cause delay or incompleteness of scheduled scans.
- ❑ Increase RAM as you increase the number of scans. Site Monster will send a warning email if resource shortage might be causing the scan delays and/or incompleteness.
- ❑ The Web Application Directory of Site Monster must give full access privilege to ASP.NET/IIS Users.

For More Support

Please go to Site Monster website (<http://sitemonster.com>), or contact Pacific Software Publishing, Inc.

2. Install

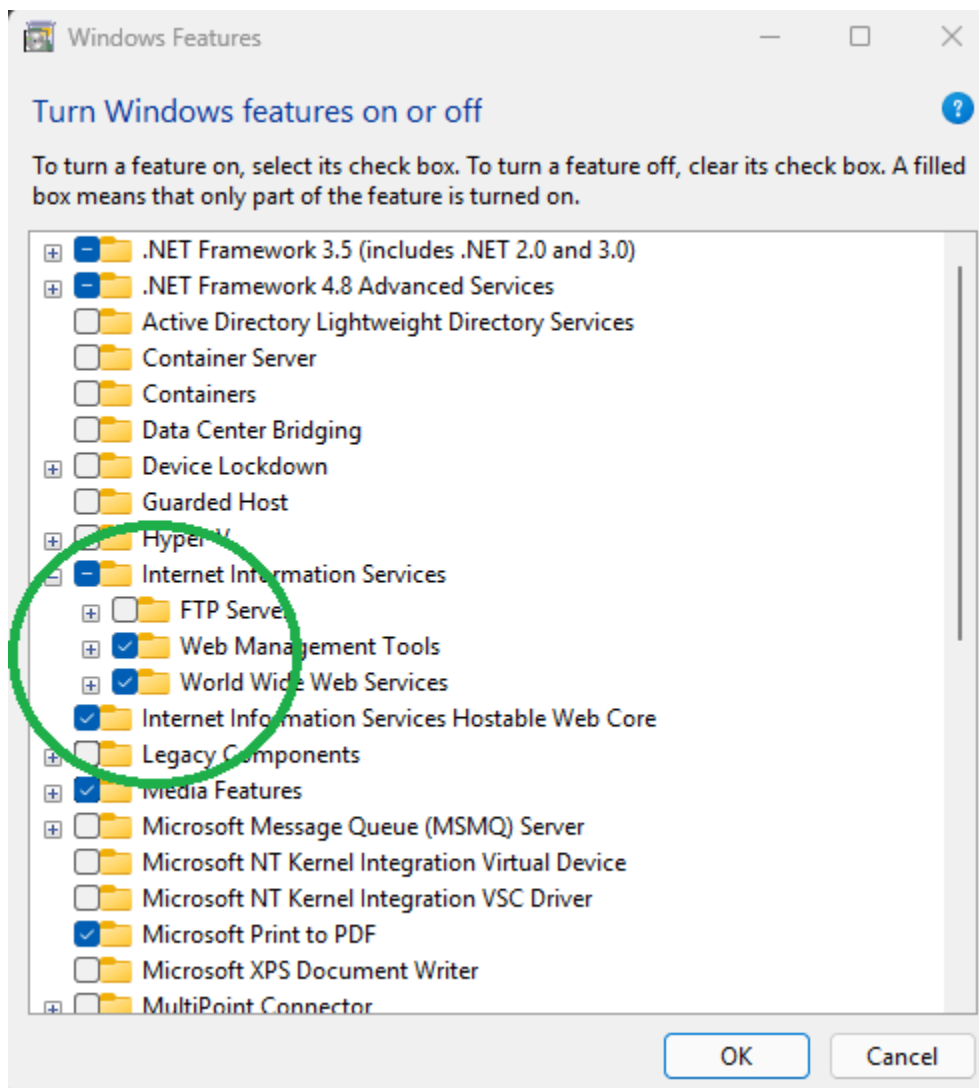
Site Monster 26.0 Installation Procedure

Before installing Site Monster 26.0 on your computer, the following two Windows features need to be installed on your computer.

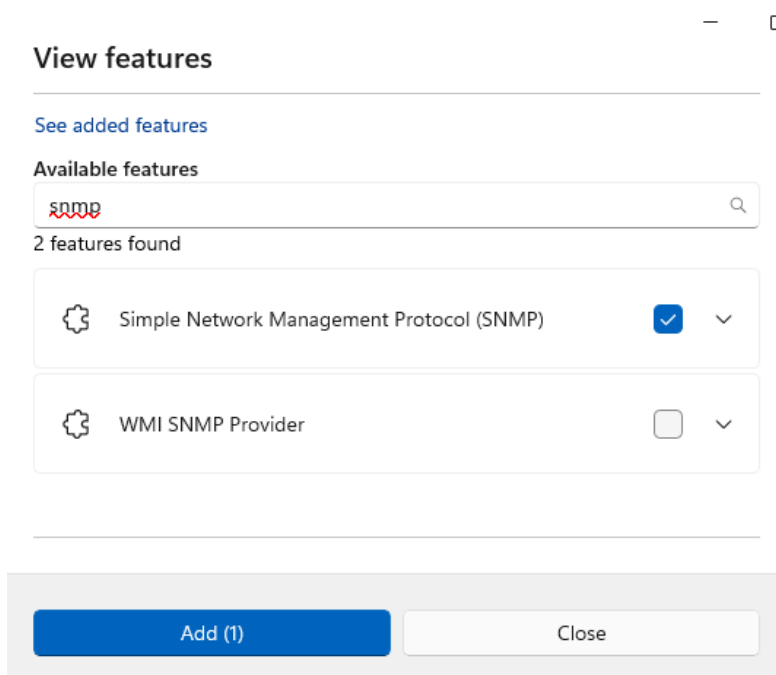
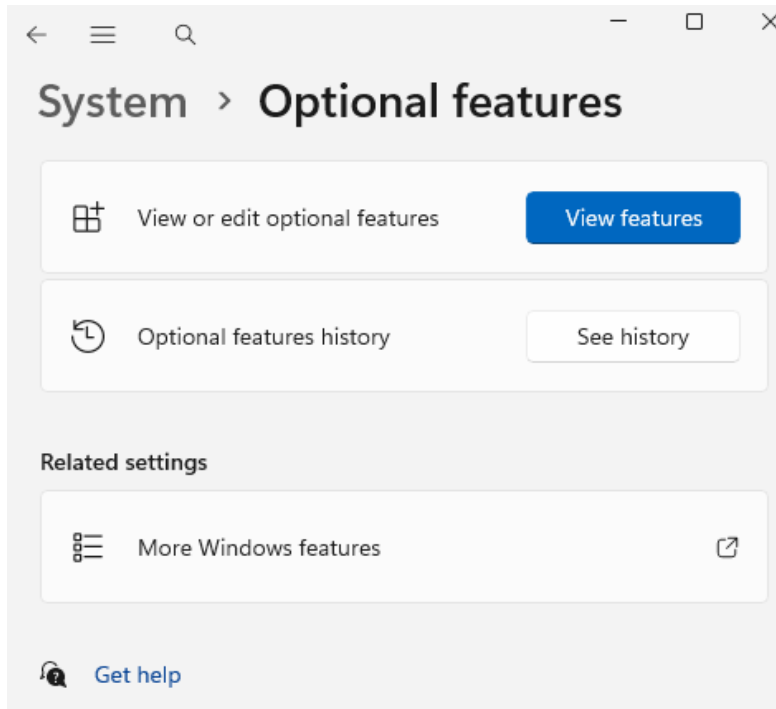
1. **IIS 10.0 or above**
2. **SNMP Provider**

To install above, please follow the steps below:

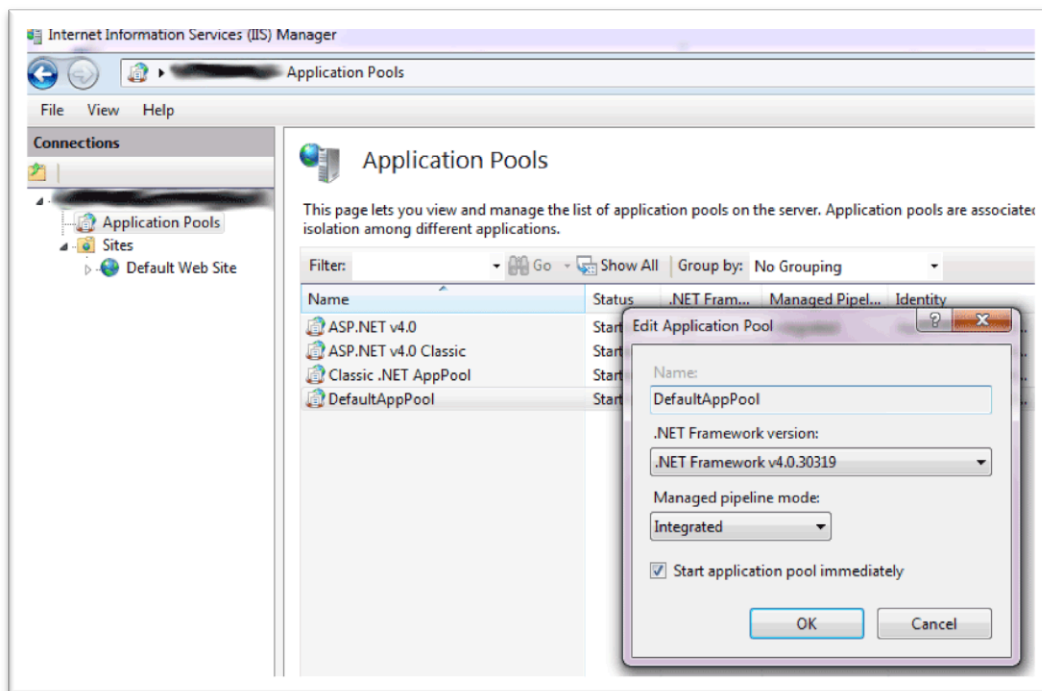
1. Open "**Control Panel**", then go to "**Programs**" → "**Turn Windows features on or off**"
2. Find the IIS component, and check boxes like the pictures below.
3. Click **OK** and install those features.



4. Open **Settings** (Win + I).
5. Go to **System > Optional features**.
6. Click the **View features** button.
7. Click **See available features**, then type **SNMP** in the search box.
8. Check the box for **Simple Network Management Protocol (SNMP)** and click **Next**, then **Install**.



9. Open "**Control Panel**", and then go to "**System and Security**" → "**Administrative Tools**". Double Click "**Internet Information Service (IIS) Manager**".
10. On the IIS Manager, Click on "**Application Pools**" in the "**Connection panel**" on the left.
11. Double Click "**DefaultAppPool**". "**Edit Application Pool**" box will pop up.
12. Select "**.NET Framework v4.0.xxxx**" for the "**.NET Framework version**". See pictures below.



13. Finally, download Site Monster 26.0 Installer package. Unzip the package, run "**Setup.exe**".

First Time Log-in Password

After the installation, it will open the browser and will direct you to the Login page. If it does not open the browser, find Desktop shortcut for the Site Monster Login Page.

Initially, Site Monster has this account for administrator login.

User Name: administrator

Password: SiteMonster26.0

3. Quick Start

This section will show you how to use Site Monster in the fastest way.

First, Set Environment Settings at "Setting" Page. "Email Setup" and "Default Message Setup" must be set correctly for Site Monster to operate fully. If these settings are not set correctly, you will not receive any important emails from Site Monster.

Second, add hosts from the "Host List" Page. Use "Add Host" for single host addition and use "Auto Detect Host" for multiple host discovery and addition.

Hostname/IP	IP	MachineName	OS	ScanCount	ScanList	
as23394- fw.pspinc.com				1	[PING]	Delete
bloguru.com	216.230.241.185	bloguru.com		1	[PING]	Delete
C4DI	10.0.20.122			0		Delete
db00.webdearc.com	216.230.241.173	db00.webdearc.com		1	[PING]	Delete
dreamersi.com	216.230.240.214	DI.Web	CentOS. 4,3	2	[PING] [HTTP PORT]	Delete

Host List

List All Hosts

Add Host

Delete Host

Auto Detect

Auto Detect Hosts

Host Group Sync

Host Group Sync

Data Backup & Restore

Data Backup

Data Restore

Help

Host List Help

Add Host

Please enter hostname or IP to the box. (eg. "hostname.com" or "255.255.255.255") Click "Check This Host" link to test if this Hostname/IP is reachable by Ping. You can still add Host to your Host List even if this Host does not pass the Ping test. "Machine Name" and "OS" are for your reference. These can be changed later.

Hostname/IP:

[Check This Hostname/IP](#)

Add Ping Scan

Inherit Scan

Schedules of:

Machine Name: (Optional)

OS: (Optional)

Host List

List All Hosts

Add Host

Delete Host

Auto Detect

Auto Detect Hosts

Host Group Sync

Host Group Sync

Data Backup & Restore

Data Backup

Data Restore

Help

Host List Help

Auto Detect Hosts

Enter the range of IPv4 to search hosts. Discovered Hosts can be added to scan list at once. If you want to find hostname from DNS, check box "Check DNS Name". Auto detection process may take a time.

From: . . .

To: . . .

Check DNS Name

Detected Hosts:

Select hosts you want to add by checking the boxes, then add them to SiteMonster host list. You can add selected hosts with no scans, with ping scans, or with any existing scan schedule from SiteMonster host list.

Select	IP	Hostname/IP	MachineName	OS
<input type="checkbox"/>	10.0.5.101	APPTSTING5	<input style="width: 80px;" type="text"/>	<input style="width: 80px;" type="text"/>
<input type="checkbox"/>	10.0.5.102	APPTST	<input style="width: 80px;" type="text"/>	<input style="width: 80px;" type="text"/>

Selected Hosts:

Use Scan Schedule of:

Third, Add Scan Schedule from **"Host View"** Page. Choose the host you want to add scans from **"Host List"** and click **"Detail"** to jump to the **"Host View"** Page of the host. At the **"Host View"** page, select the scan you want to add to this host under **"Add/Edit Menu"** on the left column.

Host View
localhost

Select Host:
localhost

Add/Edit Menu

- Profile
- Ping
- TCP/UDP Port
- HTTP(Port & Page)
- HTTPS(Port & Page)
- FTP(Port & Upload/Delete)
- SMTP(Port)
- POP(Port & Email)
- IMAP(Port & Email)
- CPU
- MEMORY
- DISK
- TRAFFIC
- SNMP
- MySQL
- Custom

Help

Host View Help

IP: 127.0.0.1

Machine Name: MyComputer

OS:

Date Added:

OK	Warning	Critical	All
8	0	3	11

HostName/IP	Test	Status	Last Run	Status Information
localhost	CPU	10/10	2012/06/26 14:41:33	OK. Average CPU Usage: 17%. 4 CPU(s) found.
localhost	CUSTOM 1	10/10	2012/06/26 14:41:35	StatusCode:(1) ReturnValue:100 Comment:This is an comment.
localhost	CUSTOM 2	10/10	2012/06/26 14:41:35	StatusCode:(1) ReturnValue:100 Comment:This is an comment.
localhost	DISK 1	0/10	2012/06/26 14:41:34	A:~Available Space Low. Size=0MB Used=0MB. DownTime:18d21h20m22s
localhost	MEMORY 5	0/10	2012/06/26 14:41:35	Physical Memory:Available Space Low. Size=1759MB Used=1291MB. DownTime:0d4h6m58s
localhost	MEMORY 6	0/10	2012/06/26 14:41:35	Could not get Memory information. Error Code:-2000 DownTime:18d21h20m22s
localhost	SNMP 1	10/10	2012/06/26 14:41:35	User_Number:OK. OID:.1.3.6.1.2.1.25.1.5.0 Value:1
localhost	SNMP 2	10/10	2012/06/26 14:41:35	Processes:OK. OID:.1.3.6.1.2.1.25.1.6.0 Value:51
localhost	SNMP 3	10/10	2012/06/26 14:41:34	Device10_Status:OK. OID:.1.3.6.1.2.1.25.3.2.1.5.10 Value:1
localhost	SNMP 4	10/10	2012/06/26 14:41:34	sysName:OK. OID:.1.3.6.1.2.1.1.5.0 Value:AS01
localhost	TRAFFIC	10/10	2012/06/26 14:41:34	OK. Incoming: 11037Octets. Outgoing: 5481Octets.

In order to add scans to this host, please click scan type you want to add from the left column.

If you want to copy the scan schedule of one host to another, use **"Host Group Sync"** in the **"Hostlist"** Page. This will allow you to copy the scan schedule of one host to multiple hosts. If you have servers that have the same roles, use this function to sync scan schedules of those.

Host List

List All Hosts

Add Host

Delete Host

Auto Detect

Auto Detect Hosts

Host Group Sync

Host Group Sync

Data Backup & Restore

Data Backup

Data Restore

Help

Host List Help

Host Group Sync

Using Host Group Sync, you can copy a scan schedule of master host to multiple hosts. All scans that are not scheduled in the master host will be deleted at synchronization. In order to use this function, at least one host has to be in the SiteMonster host list.

Scans: [PING] [MYSQL 3]

Select Hosts and Click "Add":

- newsmail2u.com
- ns.moshix2.net
- ns1.moshix2.net
- ns3.moshix2.net
- pop.pspinc.com
- pspinc.com
- sendmegamail.com
- sitemonster.com
- smtp.pspinc.com
- smtp2.pspinc.com
- smtp4.pspinc.com
- test06.dreamersi.net

Add >>>

<<< Remove

Selected Hosts to be Synchronized:

Sync

Monitor your servers on the "Monitor" Page. Keep this page open in your browser. If anything happens, Site Monster will send you an alert email and this page will warn you with alert sounds.

Now, you are good to go!

Monitor Scans

All Scans

All Scans
Critical + Warning
Critical Only

Status Summary			
OK	Warning	Critical (Unaware/Total)	All
242	0	1/4	246

HostName/IP	MachineName	Test	Status	Last Run	Status Information
10.0.31.5	V3 MySQL Test	MYSQL 3	10/10	2012/07/12 12:49:39	Login:OK SHOW TABLE:OK Time:10sec
localhost	MyComputer	CUSTOM 1	10/10	2012/07/12 12:47:09	StatusCode:(1) ReturnValue:100 Comment:This is an comment.
localhost	MyComputer	CUSTOM 2	10/10	2012/07/12 12:47:09	StatusCode:(1) ReturnValue:100 Comment:This is an comment.
localhost	MyComputer	DISK 1	0/10 (Aware)	2012/07/12 12:47:09	A!:Available Space Low. Size=0MB Used=0MB. DownTime:4d19h25m57s
localhost	MyComputer	MEMORY 5	0/10 (Unaware)	2012/07/12 12:47:09	Physical Memory:Available Space Low. Size=2047MB Used=1592MB. DownTime:0d0h3m49s
localhost	MyComputer	MEMORY 6	0/10 (Aware)	2012/07/12 12:47:09	Could not get Memory information. Error Code:-2000 DownTime:4d19h25m56s
localhost	MyComputer	SNMP 1	10/10	2012/07/12 12:47:09	User_Number:OK. OID: 1.3.6.1.2.1.25.1.5.0 Value:1
localhost	MyComputer	SNMP 2	10/10	2012/07/12 12:47:09	Processes:OK. OID: 1.3.6.1.2.1.25.1.6.0 Value:50

4. Settings Menu

Before using Site Monster 26.0, each user has to set the important settings. Email Setup and Message Setup are required to set.

Email Set Up

Email Address*(Required)

Each user has to set his email address to receive alert/recover emails and password change confirmation emails.

Out Going Server (SMTP Server)*(Required)

Site Monster needs at least one mail server to send messages. If none of the server is set, any alert/recover messages will not be sent.

If the SMTP Outgoing Server uses authentication, check the box "Use Authentication" and enter username and password.

Settings

- Start/Stop Scans
- Default Settings
- Email Setup**
- Message Setup
- Scan Setup
- Log Setup
- Alert Sound Setup
- Membership
 - Change Password
 - Manage User Accounts
- Help
 - Settings Help

Email Setup

Email Address

User email address is used for sending registration emails and test emails.

Email Address:

Outgoing server

SiteMonster needs at least one mail server to send message. If none of the server is set, any alert/recover messages will not be sent.

SMTP1

SMTP Server:

Use Authentication

User:

Password:

SMTP2

SMTP server:

Use Authentication

User:

Password:

SMTP3

SMTP Server:

Use Authentication

User:

Password:

SMTP4

SMTP Server:

Use Authentication

User:

Password:

Click the **"Send Test Mail"** button to check if Site Monster can send email through this SMTP Server to your email address successfully.

You can set up to 4 outgoing servers. Site Monster uses these servers in order until it succeeds in email submission.

Message Set Up

Default Message Setup*(Required)

Set up Default Alert/Recover Message. If this default message is not set, any alert/recovery message will not be sent.

Parameters are prepared to give scan-specific information on the message. (%S=ServerName/IP, %E=ScanMessage, %C=ScanType, %T=TimeStamp, %D=TotalDownTime (Recover Only)).

The screenshot shows the 'Default Message Setup' configuration page. On the left is a sidebar menu with categories: Settings (Start/Stop Scans, Default Settings, Email Setup, Message Setup, Scan Setup, Log Setup, Alert Sound Setup), Membership (Change Password, Manage User Accounts), and Help (Settings Help). The main content area is titled 'Default Message Setup' and contains two sections: 'Default Alert Message' and 'Default Recovery Message'. Each section includes instructions on how to use variables in the subject and content fields, followed by input fields for To, From, CC, BCC, Subject, and Content. The 'Default Alert Message' section has a Subject field with the value 'Server Down: %S' and a Content field with the text 'Server Down', 'Server: %S, Scan Type: %C, Time: %T, Error: %E', and 'Please take an immediate action!'. The 'Default Recovery Message' section has a Subject field with the value 'Server Up: %S' and a Content field with the text 'Server Up', 'Server: %S, Scan Type: %C, Time: %T, Total Down Time: %D', and '%E'. Both sections have 'Save' and 'Cancel' buttons at the bottom.

Section	To	From	CC	BCC	Subject	Content
Default Alert Message					Server Down: %S	Server Down Server: %S, Scan Type: %C, Time: %T, Error: %E Please take an immediate action!
Default Recovery Message	username@mysite.com	username@mysite.com			Server Up: %S	Server Up Server: %S, Scan Type: %C, Time: %T, Total Down Time: %D %E

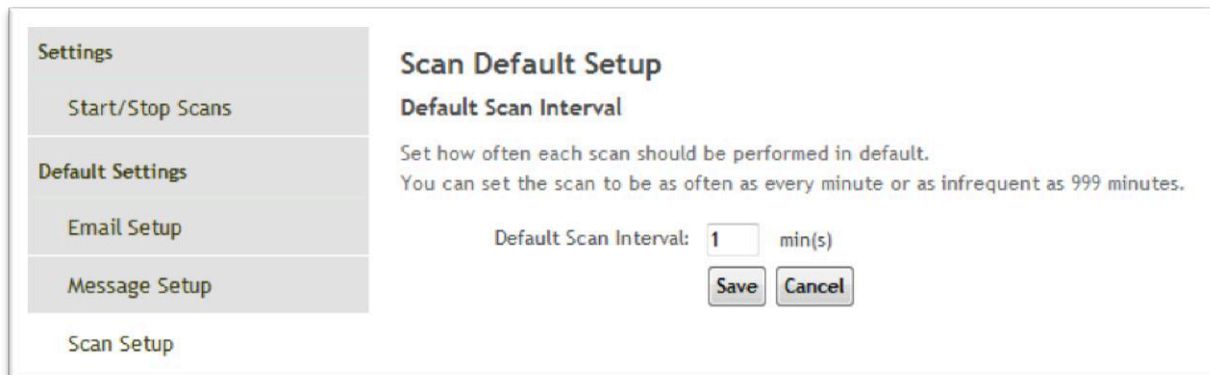
You can set Alert/Recovery Message for individual scans in the scan edit page. These default messages are used if a scan does not have its own message setups.

Scan Setup

Default Scan Interval

Set how often each scan should be performed in default.

You can set the scan to be as often as every minute or as infrequent as 999 minutes.



Log Setup

Default Log Setting

- ☑ Set log format and preservation period of log.
- ☑ Select format and enter preservation period (1 to 999) and save this setting.
- ☑ If this setting is not set, Site Monster saves all logs up to 7 days by default.
- ☑ Logs can be viewed and downloaded in the "**History**" Page.

History File Setting

- ☑ History files are used to show graphs. You can set up how long Site Monster saves these history files.
- ☑ History graphs can be viewed in the "**Host View**" Page.
- ☑ If this setting is not set, Site Monster saves a history file up to 14 days by default.

Settings	<h3>Log File Setup</h3> <h4>Default Log Setting</h4> <p>Set default log format and preservation period of individual scans.</p> <p>Log Format: All <input checked="" type="radio"/> Error Only <input type="radio"/> Never <input type="radio"/></p> <p>Preservation Period: <input type="text" value="7"/> day(s)</p> <p><input type="button" value="Save"/> <input type="button" value="Cancel"/></p> <h4>History File Setting</h4> <p>Set preservation period of individual scans history(used for history graph).</p> <p>Preservation Period: <input type="text" value="14"/> day(s)</p> <p><input type="button" value="Save"/> <input type="button" value="Cancel"/></p>
Start/Stop Scans	
Default Settings	
Email Setup	
Message Setup	
Scan Setup	
Log Setup	
Alert Sound Setup	
Membership	
Change Password	
Manage User Accounts	

Alert Sound Setup

Select Alert Sound on Monitoring Page

On server down, Alert Sound will be played repeatedly on the "**Monitor**" page. Select sound for this warning. You can also upload your sound file to the server and set it as alert sound.

By default, the sound "frogs.wav" will be played. You can upload sound files and use them as your warning sound. Please make sure if the file you upload is playable on your browser.

Sound files you uploaded will be saved on the server. If you wish, you can delete them from the server. Select file from "Delete Sound File", then click the "Delete" button.

Settings	<h3>Alert Sound Setup</h3> <h4>Choose Alert Sound in Monitoring Page.</h4> <p>Set alert sound in monitor page. When Server downs, this sound will be played on the page.</p> <p>Select File: <input type="text" value="frogs.wav(Default"/> <input type="button" value="v"/> <input type="button" value="p"/> <input type="button" value="n"/> <input type="button" value="b"/> <input type="button" value="f"/> <input type="button" value="l"/> <input type="button" value="r"/> <input type="button" value="s"/> <input type="button" value="e"/> <input type="button" value="a"/> <input type="button" value="x"/> <input type="button" value="c"/> <input type="button" value="v"/> <input type="button" value="b"/> <input type="button" value="f"/> <input type="button" value="l"/> <input type="button" value="r"/> <input type="button" value="s"/> <input type="button" value="e"/> <input type="button" value="a"/> <input type="button" value="x"/> <input type="button" value="c"/> <input type="button" value="v"/> <input type="button" value="b"/> <input type="button" value="f"/> <input type="button" value="l"/> <input type="button" value="r"/> <input type="button" value="s"/> <input type="button" value="e"/> <input type="button" value="a"/> <input type="button" value="x"/> <input type="button" value="c"/> <input type="button" value="v"/> <input type="button" value="b"/> <input type="button" value="f"/> <input type="button" value="l"/> <input type="button" value="r"/> <input type="button" value="s"/> <input type="button" value="e"/> <input type="button" value="a"/> <input type="button" value="x"/> <input type="button" value="c"/> <input type="button" value="v"/> <input type="button" value="b"/> <input type="button" value="f"/> <input type="button" value="l"/> <input type="button" value="r"/> <input type="button" value="s"/> <input type="button" value="e"/> <input type="button" value="a"/> <input type="button" value="x"/> <input type="button" value="c"/> <input type="button" value="v"/> <input type="button" value="b"/> <input type="button" value="f"/> <input type="button" value="l"/> <input type="button" value="r"/> <input type="button" value="s"/> <input type="button" value="e"/> <input type="button" value="a"/> <input type="button" value="x"/> <input type="button" value="c"/> <input type="button" value="v"/> <input type="button" value="b"/> <input type="button" value="f"/> <input type="button" value="l"/> <input type="button" value="r"/> <input type="button" value="s"/> <input type="button" value="e"/> <input type="button" value="a"/> <input type="button" value="x"/> <input type="button" value="c"/> <input type="button" value="v"/> <input type="button" value="b"/> <input type="button" value="f"/> <input type="button" value="l"/> <input type="button" value="r"/> <input type="button" value="s"/> <input type="button" value="e"/> <input type="button" value="a"/> <input type="button" value="x"/> <input type="button" value="c"/> <input type="button" value="v"/> <input type="button" value="b"/> <input type="button" value="f"/> <input type="button" value="l"/> <input type="button" value="r"/> <input type="button" value="s"/> <input type="button" value="e"/> <input type="button" value="a"/> <input type="button" value="x"/> <input type="button" value="c"/> <input type="button" value="v"/> <input type="button" value="b"/> <input type="button" value="f"/> <input type="button" value="l"/> <input type="button" value="r"/> <input type="button" value="s"/> <input type="button" value="e"/> <input type="button" value="a"/> <input type="button" value="x"/> <input type="button" value="c"/> <input type="button" value="v"/> <input type="button" value="b"/> <input type="button" value="f"/> <input type="button" value="l"/> <input type="button" value="r"/> <input type="button" value="s"/> <input type="button" value="e"/> <input type="button" value="a"/> <input type="button" value="x"/> <input type="button" value="c"/> <input type="button" value="v"/> <input type="button" value="b"/> <input type="button" value="f"/> <input type="button" value="l"/> <input type="button" value="r"/> <input type="button" value="s"/> <input type="button" value="e"/> <input type="button" value="a"/> <input type="button" value="x"/> <input type="button" value="c"/> <input type="button" value="v"/> <input type="button" value="b"/> <input type="button" value="f"/> <input type="button" value="l"/> <input type="button" value="r"/> <input type="button" value="s"/> <input type="button" value="e"/> <input type="button" value="a"/> <input type="button" value="x"/> <input type="button" value="c"/> <input type="button" value="v"/> <input type="button" value="b"/> <input type="button" value="f"/> <input type="button" value="l"/> <input type="button" value="r"/> <input type="button" value="s"/> <input type="button" value="e"/> <input type="button" value="a"/> <input type="button" value="x"/> <input type="button" value="c"/> <input type="button" value="v"/> <input type="button" value="b"/> <input type="button" value="f"/> <input type="button" value="l"/> <input type="button" value="r"/> <input type="button" value="s"/> <input type="button" value="e"/> <input type="button" value="a"/> <input type="button" value="x"/> <input type="button" value="c"/> <input type="button" value="v"/> <input type="button" value="b"/> <input type="button" value="f"/> <input type="button" value="l"/> <input type="button" value="r"/> <input type="button" value="s"/> <input type="button" value="e"/> <input type="button" value="a"/> <input type="button" value="x"/> <input type="button" value="c"/> <input type="button" value="v"/> <input type="button" value="b"/> <input type="button" value="f"/> <input type="button" value="l"/> <input type="button" value="r"/> <input type="button" value="s"/> <input type="button" value="e"/> <input type="button" value="a"/> <input type="button" value="x"/> <input type="button" value="c"/> <input type="button" value="v"/> <input type="button" value="b"/> <input type="button" value="f"/> <input type="button" value="l"/> <input type="button" value="r"/> <input type="button" value="s"/> <input type="button" value="e"/> <input type="button" value="a"/> <input type="button" value="x"/> <input type="button" value="c"/> <input type="button" value="v"/> <input type="button" value="b"/> <input type="button" value="f"/> <input type="button" value="l"/> <input type="button" value="r"/> <input type="button" value="s"/> <input type="button" value="e"/> <input type="button" value="a"/> <input type="button" value="x"/> <input type="button" value="c"/> <input type="button" value="v"/> <input type="button" value="b"/> <input type="button" value="f"/> <input type="button" value="l"/> <input type="button" value="r"/> <input type="button" value="s"/> <input type="button" value="e"/> <input type="button" value="a"/> <input type="button" value="x"/> <input type="button" value="c"/> <input type="button" value="v"/> <input type="button" value="b"/> <input type="button" value="f"/> <input type="button" value="l"/> <input type="button" value="r"/> <input type="button" value="s"/> <input type="button" value="e"/> <input type="button" value="a"/> <input type="button" value="x"/> <input type="button" value="c"/> <input type="button" value="v"/> <input type="button" value="b"/> <input type="button" value="f"/> <input type="button" value="l"/> <input type="button" value="r"/> <input type="button" value="s"/> <input type="button" value="e"/> <input type="button" value="a"/> <input type="button" value="x"/> <input type="button" value="c"/> <input type="button" value="v"/> <input type="button" value="b"/> <input type="button" value="f"/> <input type="button" value="l"/> <input type="button" value="r"/> <input type="button" value="s"/> <input type="button" value="e"/> <input type="button" value="a"/> <input type="button" value="x"/> <input type="button" value="c"/> <input type="button" value="v"/> <input type="button" value="b"/> <input type="button" value="f"/> <input type="button" value="l"/> <input type="button" value="r"/> <input type="button" value="s"/> <input type="button" value="e"/> <input type="button" value="a"/> <input type="button" value="x"/> <input type="button" value="c"/> <input type="button" value="v"/> <input type="button" value="b"/> <input type="button" value="f"/> <input type="button" value="l"/> <input type="button" value="r"/> <input type="button" value="s"/> <input type="button" value="e"/> <input type="button" value="a"/> <input type="button" value="x"/> <input type="button" value="c"/> <input type="button" value="v"/> <input type="button" value="b"/> <input type="button" value="f"/> <input type="button" value="l"/> <input type="button" value="r"/> <input type="button" value="s"/> <input type="button" value="e"/> <input type="button" value="a"/> <input type="button" value="x"/> <input type="button" value="c"/> <input type="button" value="v"/> <input type="button" value="b"/> <input type="button" value="f"/> <input type="button" value="l"/> <input type="button" value="r"/> <input type="button" value="s"/> <input type="button" value="e"/> <input type="button" value="a"/> <input type="button" value="x"/> <input type="button" value="c"/> <input type="button" value="v"/> <input type="button" value="b"/> <input type="button" value="f"/> <input type="button" value="l"/> <input type="button" value="r"/> <input type="button" value="s"/> <input type="button" value="e"/> <input type="button" value="a"/> <input type="button" value="x"/> <input type="button" value="c"/> <input type="button" value="v"/> <input type="button" value="b"/> <input type="button" value="f"/> <input type="button" value="l"/> <input type="button" value="r"/> <input type="button" value="s"/> <input type="button" value="e"/> <input type="button" value="a"/> <input type="button" value="x"/> <input type="button" value="c"/> <input type="button" value="v"/> <input type="button" value="b"/> <input type="button" value="f"/> <input type="button" value="l"/> <input type="button" value="r"/> <input type="button" value="s"/> <input type="button" value="e"/> <input type="button" value="a"/> <input type="button" value="x"/> <input type="button" value="c"/> <input type="button" value="v"/> <input type="button" value="b"/> <input type="button" value="f"/> <input type="button" value="l"/> <input type="button" value="r"/> <input type="button" value="s"/> <input type="button" value="e"/> <input type="button" value="a"/> <input type="button" value="x"/> <input type="button" value="c"/> <input type="button" value="v"/> <input type="button" value="b"/> <input type="button" value="f"/> <input type="button" value="l"/> <input type="button" value="r"/> <input type="button" value="s"/> <input type="button" value="e"/> <input type="button" value="a"/> <input type="button" value="x"/> <input type="button" value="c"/> <input type="button" value="v"/> <input type="button" value="b"/> <input type="button" value="f"/> <input type="button" value="l"/> <input type="button" value="r"/> <input type="button" value="s"/> <input type="button" value="e"/> <input type="button" value="a"/> <input type="button" value="x"/> <input type="button" value="c"/> <input type="button" value="v"/> <input type="button" value="b"/> <input type="button" value="f"/> <input type="button" value="l"/> <input type="button" value="r"/> <input type="button" value="s"/> <input type="button" value="e"/> <input type="button" value="a"/> <input type="button" value="x"/> <input type="button" value="c"/> <input type="button" value="v"/> <input type="button" value="b"/> <input type="button" value="f"/> <input type="button" value="l"/> <input type="button" value="r"/> <input type="button" value="s"/> <input type="button" value="e"/> <input type="button" value="a"/> <input type="button" value="x"/> <input type="button" value="c"/> <input type="button" value="v"/> <input type="button" value="b"/> <input type="button" value="f"/> <input type="button" value="l"/> <input type="button" value="r"/> <input type="button" value="s"/> <input type="button" value="e"/> <input type="button" value="a"/> <input type="button" value="x"/> <input type="button" value="c"/> <input type="button" value="v"/> <input type="button" value="b"/> <input type="button" value="f"/> <input type="button" value="l"/> <input type="button" value="r"/> <input type="button" value="s"/> <input type="button" value="e"/> <input type="button" value="a"/> <input type="button" value="x"/> <input type="button" value="c"/> <input type="button" value="v"/> <input type="button" value="b"/> <input type="button" value="f"/> <input type="button" value="l"/> <input type="button" value="r"/> <input type="button" value="s"/> <input type="button" value="e"/> <input type="button" value="a"/> <input type="button" value="x"/> <input type="button" value="c"/> <input type="button" value="v"/> <input type="button" value="b"/> <input type="button" value="f"/> <input type="button" value="l"/> <input type="button" value="r"/> <input type="button" value="s"/> <input type="button" value="e"/> <input type="button" value="a"/> <input type="button" value="x"/> <input type="button" value="c"/> <input type="button" value="v"/> <input type="button" value="b"/> <input type="button" value="f"/> <input type="button" value="l"/> <input type="button" value="r"/> <input type="button" value="s"/> <input type="button" value="e"/> <input type="button" value="a"/> <input type="button" value="x"/> <input type="button" value="c"/> <input type="button" value="v"/> <input type="button" value="b"/> <input type="button" value="f"/> <input type="button" value="l"/> <input type="button" value="r"/> <input type="button" value="s"/> <input type="button" value="e"/> <input type="button" value="a"/> <input type="button" value="x"/> <input type="button" value="c"/> <input type="button" value="v"/> <input type="button" value="b"/> <input type="button" value="f"/> <input type="button" value="l"/> <input type="button" value="r"/> <input type="button" value="s"/> <input type="button" value="e"/> <input type="button" value="a"/> <input type="button" value="x"/> <input type="button" value="c"/> <input type="button" value="v"/> <input type="button" value="b"/> <input type="button" value="f"/> <input type="button" value="l"/> <input type="button" value="r"/> <input type="button" value="s"/> <input type="button" value="e"/> <input type="button" value="a"/> <input type="button" value="x"/> <input type="button" value="c"/> <input type="button" value="v"/> <input type="button" value="b"/> <input type="button" value="f"/> <input type="button" value="l"/> <input type="button" value="r"/> <input type="button" value="s"/> <input type="button" value="e"/> <input type="button" value="a"/> <input type="button" value="x"/> <input type="button" value="c"/> <input type="button" value="v"/> <input type="button" value="b"/> <input type="button" value="f"/> <input type="button" value="l"/> <input type="button" value="r"/> <input type="button" value="s"/> <input type="button" value="e"/> <input type="button" value="a"/> <input type="button" value="x"/> <input type="button" value="c"/> <input type="button" value="v"/> <input type="button" value="b"/> <input type="button" value="f"/> <input type="button" value="l"/> <input type="button" value="r"/> <input type="button" value="s"/> <input type="button" value="e"/> <input type="button" value="a"/> <input type="button" value="x"/> <input type="button" value="c"/> <input type="button" value="v"/> <input type="button" value="b"/> <input type="button" value="f"/> <input type="button" value="l"/> <input type="button" value="r"/> <input type="button" value="s"/> <input type="button" value="e"/> <input type="button" value="a"/> <input type="button" value="x"/> <input type="button" value="c"/> <input type="button" value="v"/> <input type="button" value="b"/> <input type="button" value="f"/> <input type="button" value="l"/> <input type="button" value="r"/> <input type="button" value="s"/> <input type="button" value="e"/> <input type="button" value="a"/> <input type="button" value="x"/> <input type="button" value="c"/> <input type="button" value="v"/> <input type="button" value="b"/> <input type="button" value="f"/> <input type="button" value="l"/> <input type="button" value="r"/> <input type="button" value="s"/> <input type="button" value="e"/> <input type="button" value="a"/> <input type="button" value="x"/> <input type="button" value="c"/> <input type="button" value="v"/> <input type="button" value="b"/> <input type="button" value="f"/> <input type="button" value="l"/> <input type="button" value="r"/> <input type="button" value="s"/> <input type="button" value="e"/> <input type="button" value="a"/> <input type="button" value="x"/> <input type="button" value="c"/> <input type="button" value="v"/> <input type="button" value="b"/> <input type="button" value="f"/> <input type="button" value="l"/> <input type="button" value="r"/> <input type="button" value="s"/> <input type="button" value="e"/> <input type="button" value="a"/> <input type="button" value="x"/> <input type="button" value="c"/> <input type="button" value="v"/> <input type="button" value="b"/> <input type="button" value="f"/> <input type="button" value="l"/> <input type="button" value="r"/> <input type="button" value="s"/> <input type="button" value="e"/> <input type="button" value="a"/> <input type="button" value="x"/> <input type="button" value="c"/> <input type="button" value="v"/> <input type="button" value="b"/> <input type="button" value="f"/> <input type="button" value="l"/> <input type="button" value="r"/> <input type="button" value="s"/> <input type="button" value="e"/> <input type="button" value="a"/> <input type="button" value="x"/> <input type="button" value="c"/> <input type="button" value="v"/> <input type="button" value="b"/> <input type="button" value="f"/> <input type="button" value="l"/> <input type="button" value="r"/> <input type="button" value="s"/> <input type="button" value="e"/> <input type="button" value="a"/> <input type="button" value="x"/> <input type="button" value="c"/> <input type="button" value="v"/> <input type="button" value="b"/> <input type="button" value="f"/> <input type="button" value="l"/> <input type="button" value="r"/> <input type="button" value="s"/> <input type="button" value="e"/> <input type="button" value="a"/> <input type="button" value="x"/> <input type="button" value="c"/> <input type="button" value="v"/> <input type="button" value="b"/> <input type="button" value="f"/> <input type="button" value="l"/> <input type="button" value="r"/> <input type="button" value="s"/> <input type="button" value="e"/> <input type="button" value="a"/> <input type="button" value="x"/> <input type="button" value="c"/> <input type="button" value="v"/> <input type="button" value="b"/> <input type="button" value="f"/> <input type="button" value="l"/> <input type="button" value="r"/> <input type="button" value="s"/> <input type="button" value="e"/> <input type="button" value="a"/> <input type="button" value="x"/> <input type="button" value="c"/> <input type="button" value="v"/> <input type="button" value="b"/> <input type="button" value="f"/> <input type="button" value="l"/> <input type="button" value="r"/> <input type="button" value="s"/> <input type="button" value="e"/> <input type="button" value="a"/> <input type="button" value="x"/> <input type="button" value="c"/> <input type="button" value="v"/> <input type="button" value="b"/> <input type="button" value="f"/> <input type="button" value="l"/> <input type="button" value="r"/> <input type="button" value="s"/> <input type="button" value="e"/> <input type="button" value="a"/> <input type="button" value="x"/> <input type="button" value="c"/> <input type="button" value="v"/> <input type="button" value="b"/> <input type="button" value="f"/> <input type="button" value="l"/> <input type="button" value="r"/> <input type="button" value="s"/> <input type="button" value="e"/> <input type="button" value="a"/> <input type="button" value="x"/> <input type="button" value="c"/> <input type="button" value="v"/> <input type="button" value="b"/> <input type="button" value="f"/> <input type="button" value="l"/> <input type="button" value="r"/> <input type="button" value="s"/> <input type="button" value="e"/> <input type="button" value="a"/> <input type="button" value="x"/> <input type="button" value="c"/> <input type="button" value="v"/> <input type="button" value="b"/> <input type="button" value="f"/> <input type="button" value="l"/> <input type="button" value="r"/> <input type="button" value="s"/> <input type="button" value="e"/> <input type="button" value="a"/> <input type="button" value="x"/> <input type="button" value="c"/> <input type="button" value="v"/> <input type="button" value="b"/> <input type="button" value="f"/> <input type="button" value="l"/> <input type="button" value="r"/> <input type="button" value="s"/> <input type="button" value="e"/> <input type="button" value="a"/> <input type="button" value="x"/> <input type="button" value="c"/> <input type="button" value="v"/> <input type="button" value="b"/> <input type="button" value="f"/> <input type="button" value="l"/> <input type="button" value="r"/> <input type="button" value="s"/> <input type="button" value="e"/> <input type="button" value="a"/> <input type="button" value="x"/> <input type="button" value="c"/> <input type="button" value="v"/> <input type="button" value="b"/> <input type="button" value="f"/> <input type="button" value="l"/> <input type="button" value="r"/> <input type="button" value="s"/> <input type="button" value="e"/> <input type="button" value="a"/> <input type="button" value="x"/> <input type="button" value="c"/> <input type="button" value="v"/> <input type="button" value="b"/> <input type="button" value="f"/> <input type="button" value="l"/> <input type="button" value="r"/> <input type="button" value="s"/> <input type="button" value="e"/> <input type="button" value="a"/> <input type="button" value="x"/> <input type="button" value="c"/> <input type="button" value="v"/> <input type="button" value="b"/> <input type="button" value="f"/> <input type="button" value="l"/> <input type="button" value="r"/> <input type="button" value="s"/> <input type="button" value="e"/> <input type="button" value="a"/> <input type="button" value="x"/> <input type="button" value="c"/> <input type="button" value="v"/> <input type="button" value="b"/> <input type="button" value="f"/> <input type="button" value="l"/> <input type="button" value="r"/> <input type="button" value="s"/> <input type="button" value="e"/> <input type="button" value="a"/> <input type="button" value="x"/> <input type="button" value="c"/> <input type="button" value="v"/> <input type="button" value="b"/> <input type="button" value="f"/> <input type="button" value="l"/> <input type="button" value="r"/> <input type="button" value="s"/> <input type="button" value="e"/> <input type="button" value="a"/> <input type="button" value="x"/> <input type="button" value="c"/> <input type="button" value="v"/> <input type="button" value="b"/> <input type="button" value="f"/> <input type="button" value="l"/> <input type="button" value="r"/> <input type="button" value="s"/> <input type="button" value="e"/> <input type="button" value="a"/> <input type="button" value="x"/> <input type="button" value="c"/> <input type="button" value="v"/> <input type="button" value="b"/> <input type="button" value="f"/> <input type="button" value="l"/> <input type="button" value="r"/> <input type="button" value="s"/> <input type="button" value="e"/> <input type="button" value="a"/> <input type="button" value="x"/> <input type="button" value="c"/> <input type="button" value="v"/> <input type="button" value="b"/> <input type="button" value="f"/> <input type="button" value="l"/> <input type="button" value="r"/> <input type="button" value="s"/> <input type="button" value="e"/> <input type="button" value="a"/> <input type="button" value="x"/> <input type="button" value="c"/> <input type="button" value="v"/> <input type="button" value="b"/> <input type="button" value="f"/> <input type="button" value="l"/> <input type="button" value="r"/> <input type="button" value="s"/> <input type="button" value="e"/> <input type="button" value="a"/> <input type="button" value="x"/> <input type="button" value="c"/> <input type="button" value="v"/> <input type="button" value="b"/> <input type="button" value="f"/> <input type="button" value="l"/> <input type="button" value="r"/> <input type="button" value="s"/> <input type="button" value="e"/> <input type="button" value="a"/> <input type="button" value="x"/> <input type="button" value="c"/> <input type="button" value="v"/> <input type="button" value="b"/> <input type="button" value="f"/> <input type="button" value="l"/> <input type="button" value="r"/> <input type="button" value="s"/> <input type="button" value="e"/> <input type="button" value="a"/> <input type="button" value="x"/> <input type="button" value="c"/> <input type="button" value="v"/> <input type="button" value="b"/> <input type="button" value="f"/> <input type="button" value="l"/> <input type="button" value="r"/> <input type="button" value="s"/> <input type="button" value="e"/> <input type="button" value="a"/> <input type="button" value="x"/> <input type="button" value="c"/> <input type="button" value="v"/> <input type="button" value="b"/> <input type="button" value="f"/> <input type="button" value="l"/> <input type="button" value="r"/> <input type="button" value="s"/> <input type="button" value="e"/> <input type="button" value="a"/> <input type="button" value="x"/> <input type="button" value="c"/> <input type="button" value="v"/> <input type="button" value="b"/> <input type="button" value="f"/> <input type="button" value="l"/> <input type="button" value="r"/> <input type="button" value="s"/> <input type="button" value="e"/> <input type="button" value="a"/> <input type="button" value="x"/> <input type="button" value="c"/> <input type="button" value="v"/> <input type="button" value="b"/> <input type="button" value="f"/> <input type="button" value="l"/> <input type="button" value="r"/> <input type="button" value="s"/> <input type="button" value="e"/> <input type="button" value="a"/> <input type="button" value="x"/> <input type="button" value="c"/> <input type="button" value="v"/> <input type="button" value="b"/> <input type="button" value="f"/> <input type="button" value="l"/> <input type="button" value="r"/> <input type="button" value="s"/> <input type="button" value="e"/> <input type="button" value="a"/> <input type="button" value="x"/> <input type="button" value="c"/> <input type="button" value="v"/> <input type="button" value="b"/> <input type="button" value="f"/> <input type="button" value="l"/> <input type="button" value="r"/> <input type="button" value="s"/> <input type="button" value="e"/> <input type="button" value="a"/> <input type="button" value="x"/> <input type="button" value="c"/> <input type="button" value="v"/> <input type="button" value="b"/> <input type="button" value="f"/> <input type="button" value="l"/> <input type="button" value="r"/> <input type="button" value="s"/> <input type="button" value="e"/> <input type="button" value="a"/> <input type="button" value="x"/> <input type="button" value="c"/> <input type="button" value="v"/> <input type="button" value="b"/> <input type="button" value="f"/> <input type="button" value="l"/> <input type="button" value="r"/> <input type="button" value="s"/> <input type="button" value="e"/> <input type="button" value="a"/> <input type="button" value="x"/> <input type="button" value="c"/> <input type="button" value="v"/> <input type="button" value="b"/> <input type="button" value="f"/> <input type="button" value="l"/> <input type="button" value="r"/> <input type="button" value="s"/> <input type="button" value="e"/> <input type="button" value="a"/> <input type="button" value="x"/> <input type="button" value="c"/> <input type="button" value="v"/> <input type="button" value="b"/> <input type="button" value="f"/> <input type="button" value="l"/> <input type="button" value="r"/> <input type="button" value="s"/> <input type="button" value="e"/> <input type="button" value="a"/> <input type="button" value="x"/> <input type="button" value="c"/> <input type="button" value="v"/> <input type="button" value="b"/> <input type="button" value="f"/> <input type="button" value="l"/> <input type="button" value="r"/> <input type="button" value="s"/> <input type="button" value="e"/> <input type="button" value="a"/> <input type="button" value="x"/> <input type="button" value="c"/> <input type="button" value="v"/> <input type="button" value="b"/> <input type="button" value="f"/> <input type="button" value="l"/> <input type="button" value="r"/> <input type="button" value="s"/> <input type="button" value="e"/> <input type="button" value="a"/> <input type="button" value="x"/> <input type="button" value="c"/> <input type="button" value="v"/> <input type="button" value="b"/> <input type="button" value="f"/> <input type="button" value="l"/> <input type="button" value="r"/> <input type="button" value="s"/> <input type="button" value="e"/> <input type="button" value="a"/> <input type="button" value="x"/> <input type="button" value="c"/> <input type="button" value="v"/> <input type="button" value="b"/> <input type="button" value="f"/> <input type="button" value="l"/> <input type="button" value="r"/> <input type="button" value="s"/> <input type="button" value="e"/> <input type="button" value="a"/> <input type="button" value="x"/> <input type="button" value="c"/> <input type="button" value="v"/> <input type="button" value="b"/> <input type="button" value="f"/> <input type="button" value="l"/> <input type="button" value="r"/> <input type="button" value="s"/> <input type="button" value="e"/> <input type="button" value="a"/> <input type="button" value="x"/> <input type="button" value="c"/> <input type="button" value="v"/> <input type="button" value="b"/> <input type="button" value="f"/> <input type="button" value="l"/> <input type="button" value="r"/> <input type="button" value="s"/> <input type="button" value="e"/> <input type="button" value="a"/> <input type="button" value="x"/> <input type="button" value="c"/> <input type="button" value="v"/> <input type="button" value="b"/> <input type="button" value="f"/> <input type="button" value="l"/> <input type="button" value="r"/> <input type="button" value="s"/> <input type="button" value="e"/> <input type="button" value="a"/> <input type="button" value="x"/> <input type="button" value="c"/> <input type="button" value="v"/> <input type="button" value="b"/> <input type="button" value="f"/> <input type="button" value="l"/> <input type="button" value="r"/> <input type="button" value="s"/> <input type="button" value="e"/> <input type="button" value="a"/> <input type="button" value="x"/> <input type="button" value="c"/> <input type="button" value="v"/> <input type="button" value="b"/> <input type="button" value="f"/> <input type="button" value="l"/> <input type="button" value="r"/> <input type="button" value="s"/> <input type="button" value="e"/> <input type="button" value="a"/> <input type="button" value="x"/> <input type="button" value="c"/> <input type="button" value="v"/> <input type="button" value="b"/> <input type="button" value="f"/> <input type="button" value="l"/> <input type="button" value="r"/> <input type="button" value="s"/> <input type="button" value="e"/> <input type="button" value="a"/> <input type="button" value="x"/> <input type="button" value="c"/> <input type="button" value="v"/> <input type="button" value="b"/> <input type="button" value="f"/> <input type="button" value="l"/> <input type="button" value="r"/> <input type="button" value="s"/> <input type="button" value="e"/> <input type="button" value="a"/> <input type="button" value="x"/> <input type="button" value="c"/> <input type="button" value="v"/> <input type="button" value="b"/> <input type="button" value="f"/> <input type="button" value="l"/> <input type="button" value="r"/> <input type="button" value="s"/> <input type="button" value="e"/> <input type="button" value="a"/> <input type="button" value="x"/> <input type="button" value="c"/> <input type="button" value="v"/> <input type="button" value="b"/> <input type="button" value="f"/> <input type="button" value="l"/> <input type="button" value="r"/> <input type="button" value="s"/> <input type="button" value="e"/> <input type="button" value="a"/> <input type="button" value="x"/> <input type="button" value="c"/> <input type="button" value="v"/> <input type="button" value="b"/> <input type="button" value="f"/> <input type="button" value="l"/> <input type="button" value="r"/> <input type="button" value="s"/> <input type="button" value="e"/> <input type="button" value="a"/> <input type="button" value="x"/> <input type="button" value="c"/> <input type="button" value="v"/> <input type="button" value="b"/> <input type="button" value="f"/> <input type="button" value="l"/> <input type="button" value="r"/> <input type="button" value="s"/> <input type="button" value="e"/> <input type="button" value="a"/> <input type="button" value="x"/> <input type="button" value="c"/> <input type="button" value="v"/> <input type="button" value="b"/> <input type="button" value="f"/> <input type="button" value="l"/> <input type="button" value="r"/> <input type="button" value="s"/> <input type="button" value="e"/> <input type="button" value="a"/> <input type="button" value="x"/> <input type="button" value="c"/> <input type="button" value="v"/> <input type="button" value="b"/> <input type="button" value="f"/> <input type="button" value="l"/> <input type="button" value="r"/> <input type="button" value="s"/> <input type="button" value="e"/> <input type="button" value="a"/> <input type="button" value="x"/> <input type="button" value="c"/> <input type="button" value="v"/> <input type="button" value="b"/> <input type="button" value="f"/> <input type="button" value="l"/> <input type="button" value="r"/> <input type="button" value="s"/> <input type="button" value="e"/> <input type="button" value="a"/> <input type="button" value="x"/> <input type="button" value="c"/> <input type="button" value="v"/> <input type="button" value="b"/> <input type="button" value="f"/> <input type="button" value="l"/> <input type="button" value="r"/> <input type="button" value="s"/> <input type="button" value="e"/> <input type="button" value="a"/> <input type="button" value="x"/> <input type="button" value="c"/> <input type="button" value="v"/> <input type="button" value="b"/> <input type="button" value="f"/> <input type="button" value="l"/> <input type="button" value="r"/> <input type="button" value="s"/> <input type="button" value="e"/> <input type="button" value="a"/> <input type="button" value="x"/> <input type="button" value="c"/> <input type="button" value="v"/> <input type="button" value="b"/> <input type="button" value="f"/> <input type="button" value="l"/> <input type="button" value="r"/> <input type="button" value="s"/> <input type="button" value="e"/> <input type="button" value="a"/> <input type="button" value="x"/> <input type="button" value="c"/> <input type="button" value="v"/> <input type="button" value="b"/> <input type="button" value="f"/> <input type="button" value="l"/> <input type="button" value="r"/> <input type="button" value="s"/> <input type="button" value="e"/> <input type="button" value="a"/> <input type="button" value="x"/> <input type="button" value="c"/> <input type="button" value="v"/> <input type="button" value="b"/> <input type="button" value="f"/> <input type="button" value="l"/> <input type="button" value="r"/> <input type="button" value="s"/> <input type="button" value="e"/> <input type="button" value="a"/> <input type="button" value="x"/> <input type="button" value="c"/> <input type="button" value="v"/> <input type="button" value="b"/> <input type="button" value="f"/> <input type="button" value="l"/> <input type="button" value="r"/> <input type="button" value="s"/> <input type="button" value="e"/> <input type="button" value="a"/> <input type="button" value="x"/> <input type="button" value="c"/> <input type="button" value="v"/> <input type="button" value="b"/> <input type="button" value="f"/> <input type="button" value="l"/> <input type="button" value="r"/> <input type="button" value="s"/> <input type="button" value="e"/> <input type="button" value="a"/> <input type="button" value="x"/> <input type="button" value="c"/> <input type="button" value="v"/> <input type="button" value="b"/> <input type="button" value="f"/> <input type="button" value="l"/> <input type="button" value="r"/> <input type="button" value="s"/> <input type="button" value="e"/> <input type="button" value="a"/> <input type="button" value="x"/> <input type="button" value="c"/> <input type="button" value="v"/> <input type="button" value="b"/> <input type="button" value="f"/> <input type="button" value="l"/> <input type="button" value="r"/> <input type="button" value="s"/> <input type="button" value="e"/> <input type="button" value="a"/> <input type="button" value="x"/> <input type="button" value="c"/> <input type="button" value="v"/> <input type="button" value="b"/> <input type="button" value="f"/> <input type="button" value="l"/> <input type="button" value="r"/> <input type="button" value="s"/> <input type="button" value="e"/> <input type="button" value="a"/> <input type="button" value="x"/> <input type="button" value="c"/> </p>
-----------------	--

Change Password

Change Password for your account. Confirmation email will be sent to your email address.

Settings

Start/Stop Scans

Default Settings

Email Setup

Message Setup

Scan Setup

Log Setup

Alert Sound Setup

Membership

Change Password

Manage User Accounts

Change Password

Change user password.
Password is unrecoverable, so please keep your password where you can find.

Current Password:

New Password:

Confirm Password:

Manage User Accounts (Administrator Only)

In this Page, Administrator can see all users list, add/delete user, and login as user.

Settings

Start/Stop Scans

Default Settings

Email Setup

Message Setup

Scan Setup

Log Setup

Alert Sound Setup

Membership

Change Password

Manage User Accounts

Help

Settings Help

Manage User Accounts

List of Current users

User Name	Privilege	Scan Count	Scan Status	Date Created	Disk Usage
administrator	admin	308	Running	6/7/2012 5:19:27 PM	434MB
user3	user	0	Running	6/19/2012 5:21:17 PM	0B
someone	user	0	Running	6/20/2012 11:12:49 AM	0B
user1	user	0	Running	6/21/2012 4:31:42 PM	0B

Add User

User Name:

Password:

Delete User

User Name:

Log in as User

User Name:

5. Host List Page

In this page, you can List, Add, Delete, and Copy hosts.

Add Single Host: go to **"Add Host"**

Add Hosts Found by Auto Detect at Once: go to **"Auto Detect Hosts"**

Copy Scan Setting: go to **"Host Group Sync"**.

Host List and Map View

Lists all hosts. Each row has the link to Host View (detail) and Delete Host page (delete).

If there are ping scans, Map View of hosts are shown under the Host List.

Host List

- List All Hosts
- Add Host
- Delete Host
- Auto Detect
- Auto Detect Hosts
- Host Group Sync
- Host Group Sync
- Data Backup & Restore
- Data Backup
- Data Restore
- Help
- Host List Help

Host List

All hosts in this account are shown below. To see details and/or edit scan schedules, click "Detail". To add hosts in this account, go to menu "Add Host" or "Auto Detect Hosts".

Search: from All List Per Page: 10

Number of Hosts: 112

<< Previous
1
2
3
4
5
6
7
8
9
10
11
12
Next >>

Hostname/IP	IP	MachineName	OS	ScanCount	Scan_List	
as23394-fw.pspinc.com				1	[PING]	Delete
bioguru.com	216.230.241.185	bioguru.com		1	[PING]	Delete
C-01	10.0.20.122			0		Delete
db00.webdearc.com	216.230.241.173	db00.webdearc.com		1	[PING]	Delete
dreamers1.com	216.230.240.214	DI.Web	CentOS 4.3	2	[PING] [HTTP PORT]	Delete
ffttmail-in01.dreamers1.net	216.230.241.187	ffttmail-in01		1	[PING]	Delete
ffttmail-in02.dreamers1.net	216.230.241.188	ffttmail-in02		1	[PING]	Delete
ffttmail-in03.dreamers1.net	216.230.241.189	ffttmail-in03		1	[PING]	Delete
imap.pspinc.com	216.230.246.123	imap.pspinc.com	unknown	2	[IMAP PORT] [PING]	Delete
localhost	127.0.0.1	MyComputer		11	[CPU] [SNMP 3] [TRAFFIC] [DISK 1] [SNMP 4] [CUSTOM 2] [CUSTOM 1] [SNMP 2] [MEMORY 6] [MEMORY 5] [SNMP 1]	Delete

Round Trip Ping Time (ms)

Add Host

In this page, you can add a single host.

- ❑ **Hostname:** This is required. Hostname can be IP. Clicking "**Check This Host**" will do a ping test on this Hostname. If "**Check This Host**" does not give you a matching IP of the Hostname, check your DNS name record of this host. If your target server does not have a global DNS name on the Internet, just enter IP in the "**Hostname/IP**" field.
- ❑ **Add Ping** (optional): Checking this box will add Ping Scan to this Host when it is added.
- ❑ **Inherit Scan Schedule** (optional): Checking this box will copy all scans of a host that are already in the Site Monster Host List. This will copy all custom messages and event actions.
- ❑ **Machine Name:** If you want to give a short description about this Host, please use this field.
- ❑ **OS:** If you want to give OS information about this Host, please use this field.

Host List

List All Hosts

Add Host

Delete Host

Auto Detect

Auto Detect Hosts

Host Group Sync

Host Group Sync

Data Backup & Restore

Data Backup

Data Restore

Add Host

Please enter hostname or IP to the box. (eg. "hostname.com" or "255.255.255.255") Click "Check This Host" link to test if this Hostname/IP is reachable by Ping. You can still add Host to your Host List even if this Host does not pass the Ping test. "Machine Name" and "OS" are for your reference. These can be changed later.

Hostname/IP:

[Check This Hostname/IP](#)

Add Ping Scan

Inherit Scan

Schedules of:

Machine Name: (Optional)

OS: (Optional)

Delete Host

In this page, you can delete a host from Site Monster. Once it has been deleted, all information and past history files will be lost.

Select the Host you want to delete from the dropdown menu, and then click "**Delete**".

Auto Detect Hosts

In this Page, you can find hosts in a certain IPv4 range, and add detected hosts to Site Monster at once. Reachable IPs by Ping (ICMP) will be shown.

- ☑ **DNS Lookup option:** If checked, Auto detect will try to find DNS names of reachable IPs.

To find hosts, enter the range of IPv4, and click "**Find**".

If it finds any hosts, it will give you a list of all detected hosts with IP and Hostname.

Check boxes of hosts you want to add to Site Monster, then add those selected hosts by choosing the following three options.

- ☑ **"Add Selected Hosts":** this will add all selected hosts without any scan schedule.
- ☑ **"Add Selected Hosts with Ping Scan":** this will add all selected hosts with ping scan.
- ☑ **"Add Selected Hosts with Existing Scan Schedule":** this will add all selected hosts with scans that one of the existing hosts has. This will copy all custom messages and event actions.

Host List

List All Hosts

Add Host

Delete Host

Auto Detect

Auto Detect Hosts

Host Group Sync

Host Group Sync

Data Backup & Restore

Data Backup

Data Restore

Help

Host List Help

Auto Detect Hosts

Enter the range of IPv4 to search hosts. Discovered Hosts can be added to scan list at once. If you want to find hostname from DNS, check box "Check DNS Name". Auto detection process may take a time.

From: . . .

To: . . .

Check DNS Name

Detected Hosts:

Select hosts you want to add by checking the boxes, then add them to SiteMonster host list. You can add selected hosts with no scans, with ping scans, or with any existing scan schedule from SiteMonster host list.

Select	IP	Hostname/IP	MachineName	OS
<input type="checkbox"/>	10.0.5.101	APPTESTING5	<input type="text"/>	<input type="text"/>
<input type="checkbox"/>	10.0.5.102	APPTTEST	<input type="text"/>	<input type="text"/>

Selected Hosts:

Use Scan Schedule of:

Host Group Sync

On this page you can copy the scan schedule of one host to multiple hosts.

First, select the master host, which you want to copy the scan schedule from. For a reference, it will show you the scans this host has.

Add Hosts you want to copy scan schedules to. Selecting host from the left box and clicking "**add**" will add hosts to the right box.

Click "**Sync**" to copy. This will copy all custom messages and event actions.

*Note: Any scan schedules that are NOT in the master host will be deleted.

*Note: This synchronization is not continuous, meaning that any hosts' setting change in the future will not reflect on the hosts.

Host List

List All Hosts

Add Host

Delete Host

Auto Detect

Auto Detect Hosts

Host Group Sync

Host Group Sync

Data Backup & Restore

Data Backup

Data Restore

Help

Host List Help

Host Group Sync

Using Host Group Sync, you can copy a scan schedule of master host to multiple hosts. All scans that are not scheduled in the master host will be deleted at synchronization. In order to use this function, at least one host has to be in the SiteMonster host list.

10.0.31.5 Scans: [PING] [MYSQL 3]

Select Hosts and Click "Add":

- newsmail2u.com
- ns.moshix2.net
- ns1.moshix2.net
- ns3.moshix2.net
- pop.pspinc.com
- pspinc.com
- sendmegamail.com
- sitemonster.com
- smtp.pspinc.com
- smtp2.pspinc.com
- smtp4.pspinc.com
- test06.dreamersi.net

Add >>>

<<< Remove

Sync

Selected Hosts to be Synchronized:

Data Backup

In this page, you can export and save an account backup file. Save Backup file for safe place.

The exporting process may take some time depending on the amount of data. Please wait patiently.

Host List

List All Hosts

Add Host

Delete Host

Auto Detect

Auto Detect Hosts

Host Group Sync

Host Group Sync

Data Backup & Restore

Data Backup

Data Restore

Help

Host List Help

Data Backup

In this page, you can save complete data of your SiteMonster account. Backup file can restore the setting of your account in a different server or in a different account.

The following will be saved.

- + All Scan Settings
- + Email Settings
- + Alert/Recover Messages
- + Custom Programs
- + Alert Sound Files
- + All Default Settings

*Log files and History files will not be saved.

Please save back up zip file to safe place.

Go to "Data Restore" to restore the setting using this backup file.

Backup administrator's account:

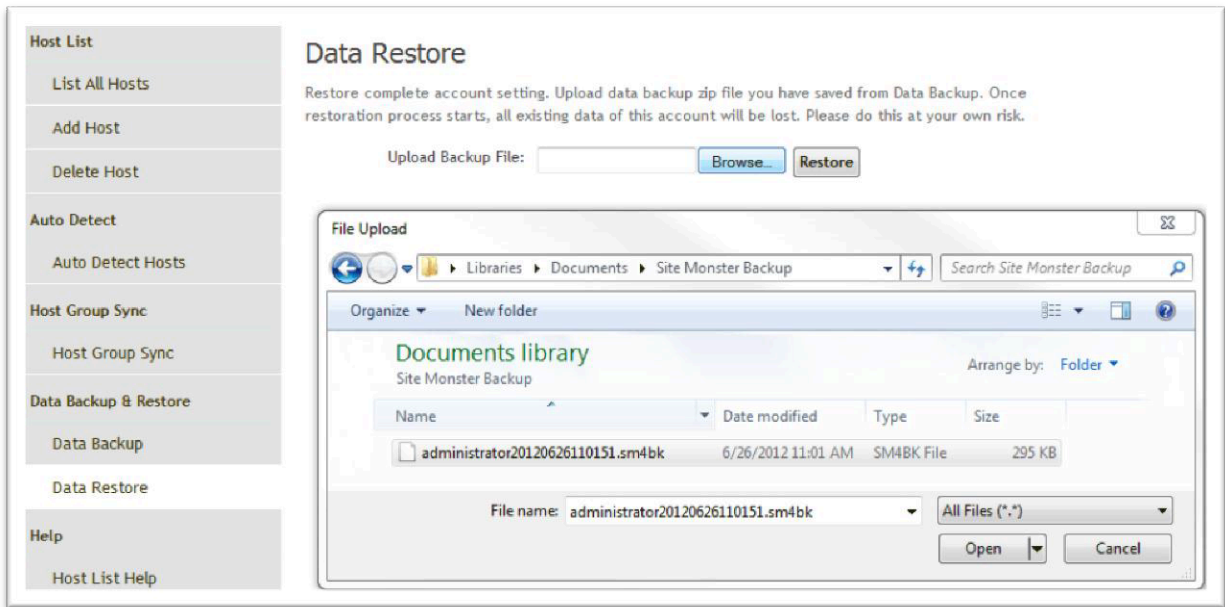
[Export Backup](#)

Data Restore

In this page, you can import and restore an account with a backup file.

Browse and select Site Monster Backup File, then click "**Restore**".

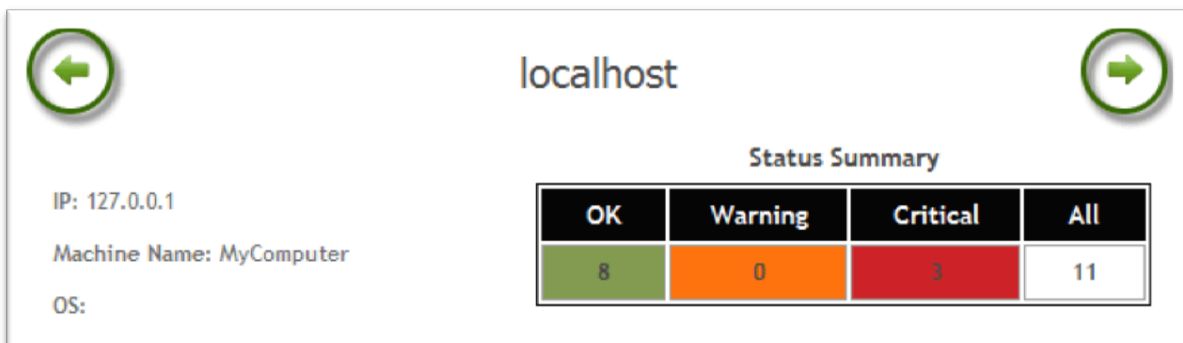
The importing process may take some time depending on the amount of data. Please wait patiently.



6. Host View Page

In this Page, you can see the overview of the single host. Also, you can edit the scan schedule of a single host.

To go to the next/previous host, click green arrows on the side of Hostname.



Scan List

Scan List shows all scans of this host. The List will automatically update every minute.

HostName/IP	Test	Status	Last Run	Status Information
localhost	CPU	10/10	2012/06/26 14:41:33	OK. Average CPU Usage: 17%. 4 CPU(s) found.
localhost	CUSTOM 1	10/10	2012/06/26 14:41:35	StatusCode:(1) ReturnValue:100 Comment:This is an comment.
localhost	CUSTOM 2	10/10	2012/06/26 14:41:35	StatusCode:(1) ReturnValue:100 Comment:This is an comment.
localhost	DISK 1	0/10	2012/06/26 14:41:34	A:\:Available Space Low. Size=0MB Used=0MB. DownTime:18d21h20m22s
localhost	MEMORY 5	0/10	2012/06/26 14:41:35	Physical Memory:Available Space Low. Size=1759MB Used=1291MB. DownTime:0d4h6m58s
localhost	MEMORY 6	0/10	2012/06/26 14:41:35	Could not get Memory information. Error Code:-2000 DownTime:18d21h20m22s
localhost	SNMP 1	10/10	2012/06/26 14:41:35	User_Number:OK. OID:.1.3.6.1.2.1.25.1.5.0 Value:1
localhost	SNMP 2	10/10	2012/06/26 14:41:35	Processes:OK. OID:.1.3.6.1.2.1.25.1.6.0 Value:51
localhost	SNMP 3	10/10	2012/06/26 14:41:34	Device10_Status:OK. OID:.1.3.6.1.2.1.25.3.2.1.5.10 Value:1
localhost	SNMP 4	10/10	2012/06/26 14:41:34	sysName:OK. OID:.1.3.6.1.2.1.1.5.0 Value:AS01
localhost	TRAFFIC	10/10	2012/06/26 14:41:34	OK. Incoming: 11037Octets. Outgoing: 5481Octets.

In order to add scans to this host, please click scan type you want to add from the left column.

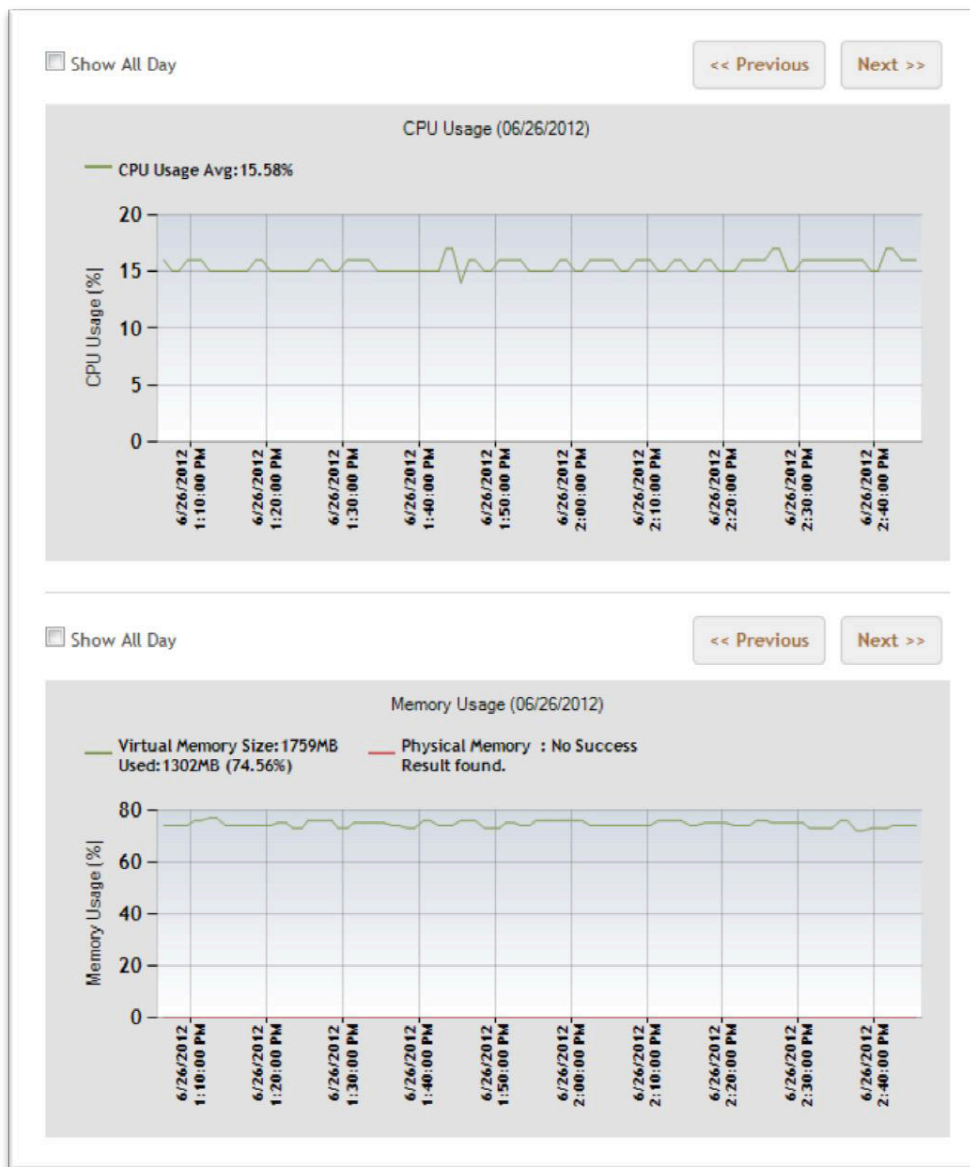
History Graphs

The following scans will give you history graphs. To change how long the system keeps the record, go to **"Setting"** → **"Log Setup"** → **"History File Setting"**.

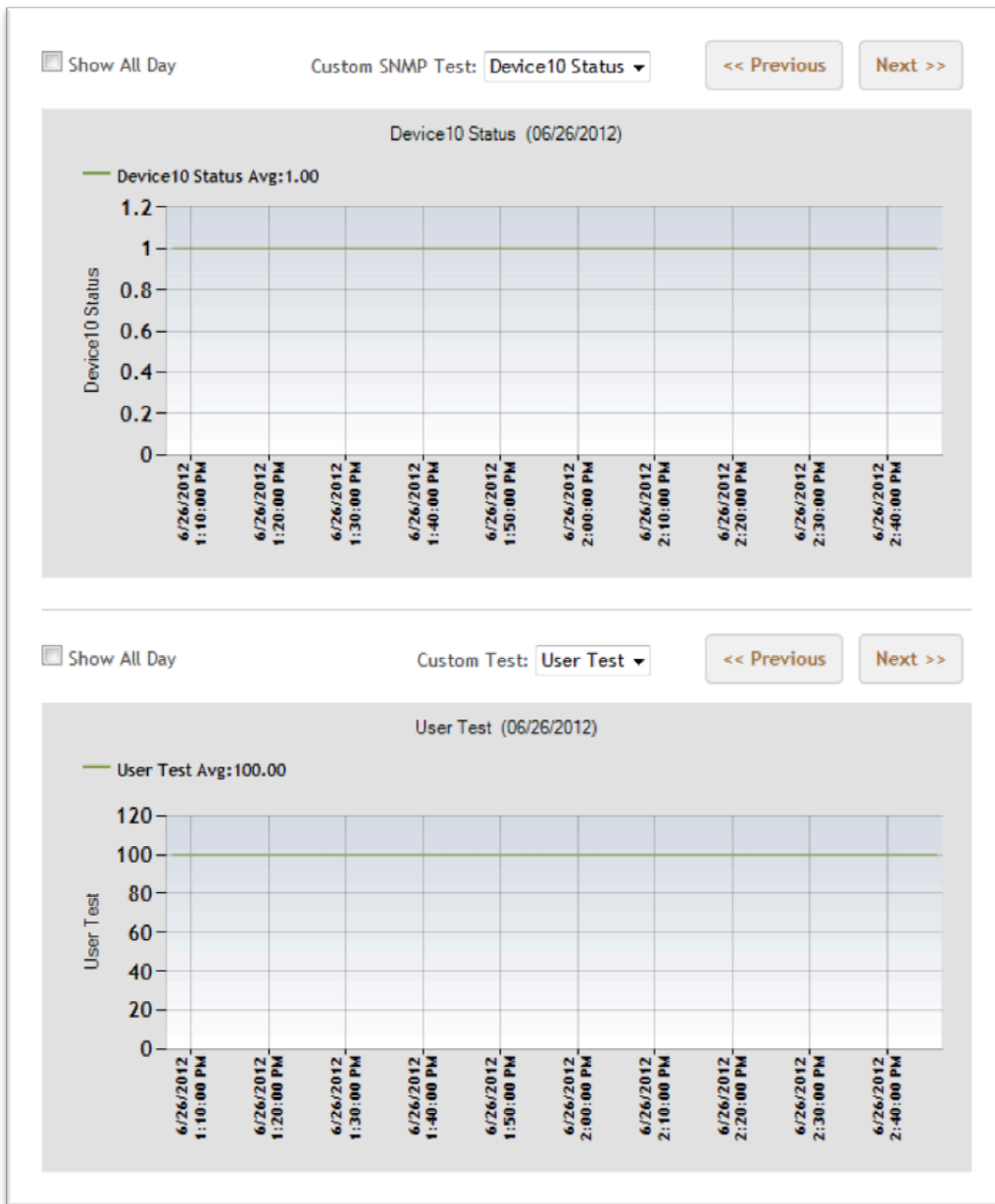
(Ping, HTTP Page, HTTPS Page, FTP Write/Read/Delete, POP Mail, IMAP Mail, CPU, Memory, Disk, Traffic, SNMP(Custom) with Numeric Return value, Custom with Numeric return value)

On page load, it only shows you the latest 100 scan graph. To see the graph of all day, click the **"Show All Day"** check box.

Click **"« Previous"** and **"Next »"** to change the date.



For some scans you may have more than one for one host, for such scans, there is a dropdown menu to select which one to show on the graph.



Edit Host Profile

To Update IP of this host, or change Machine Name/OS Information, click "**Profile**" Under "**Add/Edit Scan**" menu on the left.

Add/Edit Scan

Host: 10.0.100.128

Scan: PROFILE

10.0.100.128

Update IP of current Hostname/IP

IP: 10.0.100.128

Edit Host Information

Hostname/IP: [Check This Hostname/IP](#)

Machine Name:

OS:

Date Added:

Edit Scan Schedules

In order to edit scan schedules, click the menu on the left. This will open the scan edit page.

Host View

Select Host:
localhost

Add/Edit Menu

- Profile
- Ping
- TCP/UDP Port
- HTTP(Port & Page)
- HTTPS(Port & Page)
- FTP(Port & Upload/Delete)
- SMTP(Port)
- POP(Port & Email)
- IMAP(Port & Email)
- CPU
- MEMORY
- DISK
- TRAFFIC
- SNMP
- MySQL
- Custom

Help

Host View Help

localhost

Status Summary

OK	Warning	Critical	All
8	0	3	11

IP: 127.0.0.1
Machine Name: MyComputer
OS:
Date Added:

HostName/IP	Test	Status	Last Run	Status Information
localhost	CPU	10/10	2012/06/26 14:41:33	OK. Average CPU Usage: 17%. 4 CPU(s) found.
localhost	CUSTOM 1	10/10	2012/06/26 14:41:35	StatusCode:(1) ReturnValue:100 Comment:This is an comment.
localhost	CUSTOM 2	10/10	2012/06/26 14:41:35	StatusCode:(1) ReturnValue:100 Comment:This is an comment.
localhost	DISK 1	0/10	2012/06/26 14:41:34	A!:Available Space Low. Size=0MB Used=0MB. DownTime:18d21h20m22s
localhost	MEMORY 5	0/10	2012/06/26 14:41:35	Physical Memory:Available Space Low. Size=1759MB Used=1291MB. DownTime:0d4h6m58s
localhost	MEMORY 6	0/10	2012/06/26 14:41:35	Could not get Memory information. Error Code:-2000 DownTime:18d21h20m22s
localhost	SNMP 1	10/10	2012/06/26 14:41:35	User_Number:OK. OID:.1.3.6.1.2.1.25.1.5.0 Value:1
localhost	SNMP 2	10/10	2012/06/26 14:41:35	Processes:OK. OID:.1.3.6.1.2.1.25.1.6.0 Value:51
localhost	SNMP 3	10/10	2012/06/26 14:41:34	Device10_Status:OK. OID:.1.3.6.1.2.1.25.3.2.1.5.10 Value:1
localhost	SNMP 4	10/10	2012/06/26 14:41:34	sysName:OK. OID:.1.3.6.1.2.1.1.5.0 Value:AS01
localhost	TRAFFIC	10/10	2012/06/26 14:41:34	OK. Incoming: 11037Octets. Outgoing: 5481Octets.

In order to add scans to this host, please click scan type you want to add from the left column.

In each scan edit page, you can select the Default/Custom message. If Custom is selected, **"Edit Custom Message"** button will be enabled. Click this button to edit a custom message for this particular scan.

In each scan edit page, you can add event action. Click **"Edit Event Actions"** button to set up event action for this particular scan.

Add/Edit Scan
 Host: 10.0.100.128
 Scan: HTTP

Upload Custom Program
 Please select your custom program to upload to the server. Uploaded program can be run by SiteMonster.

Delete Custom Program
 Please Select custom program to delete from SiteMonster. Make sure you do not use the program you are deleting.
 File Name:

HTTP Page Download 1 Event Action Setting

On Alert Action

Set the custom alert action. You can use following variables in arguments: %S=ServerName/IP, %E=ErrorMessage, %C=ScanType, %T=TimeStamp

Run Executable/Script

File Name:

*Only the files in the server are shown. Please add/delete file from [Here](#).

Arguments:

Send HTTP Query

URL:

On Recover Action

Set the custom recover action. You can use following variables in arguments: %S=ServerName/IP, %E=ErrorMessage, %C=ScanType, %T=TimeStamp, %D=TotalDownTime

Run Executable/Script

File Name:

*Only the files in the server are shown. Please add/delete file from [Here](#).

Arguments:

Send HTTP Query

URL:

- You can upload a program to the server to use in this event action. You can only use programs/scripts that are uploaded on the server.
- You can set web queries to run on events. Site Monster will not check this link, so make sure you enter accurately (start with http:// or https://).

Note for Custom Scans

*Custom Exe Rule the Executable Files/Scripts have to output these lines to standard output to be run by Site Monster:

- (1) Status Code (Required): Integer. Site Monster considers all negative integers as Error and all positive integers as Success. Zero is reserved.
- (2) Return Value (Required): Either String or Integer. Site Monster can test this value. If this is an Integer, Site Monster can draw a graph for this test scan.
- (3) Comments (Optional): This will be shown in Log and in Status information.

Example:

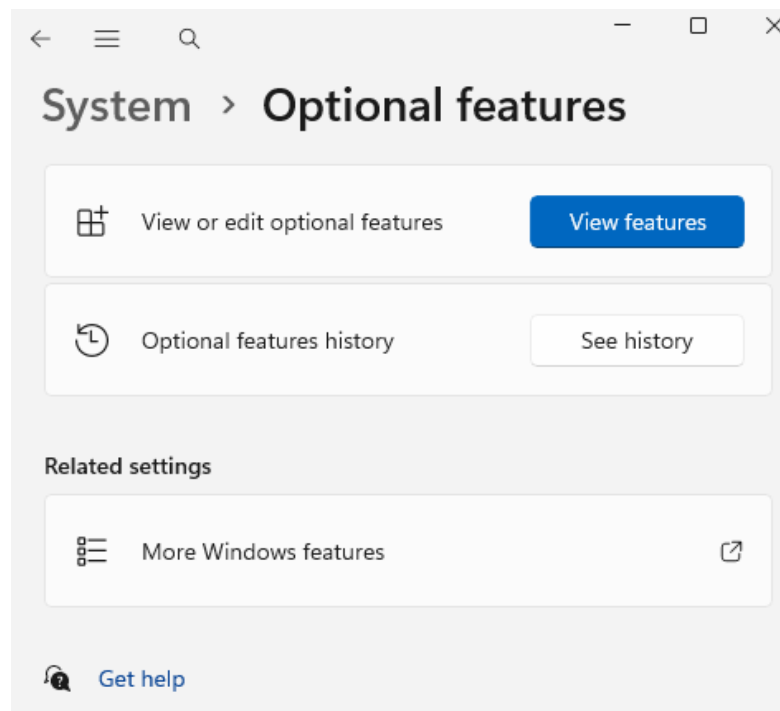
```
>> myCustomProgram.exe Arg1 Arg2
>> 1 <===== (1) Status Code
>> 500 <===== (2) Return Value
>> Scan Succeeded <===== (3) Comment
>>
```

How to Set up SNMP Service on Windows PC

In order to use SNMP monitoring scans in Site Monster 26.0, you need to enable SNMP Service in the machines you are going to monitor.

For the Windows PC, Here are the steps to enable SNMP scans. (SNMP scans are: CPU, Memory, and Disk, Traffic & SNMP Custom scans)

1. On the target machine, Open **Settings** (Win + I).
2. Go to **System > Optional features**.
3. Click the **View features** button.



4. Click **See available features**, then type **SNMP** in the search box.
5. Check the box for **Simple Network Management Protocol (SNMP)** and click **Next**, then **Install**.



View features - □

[See added features](#)

Available features

🔍

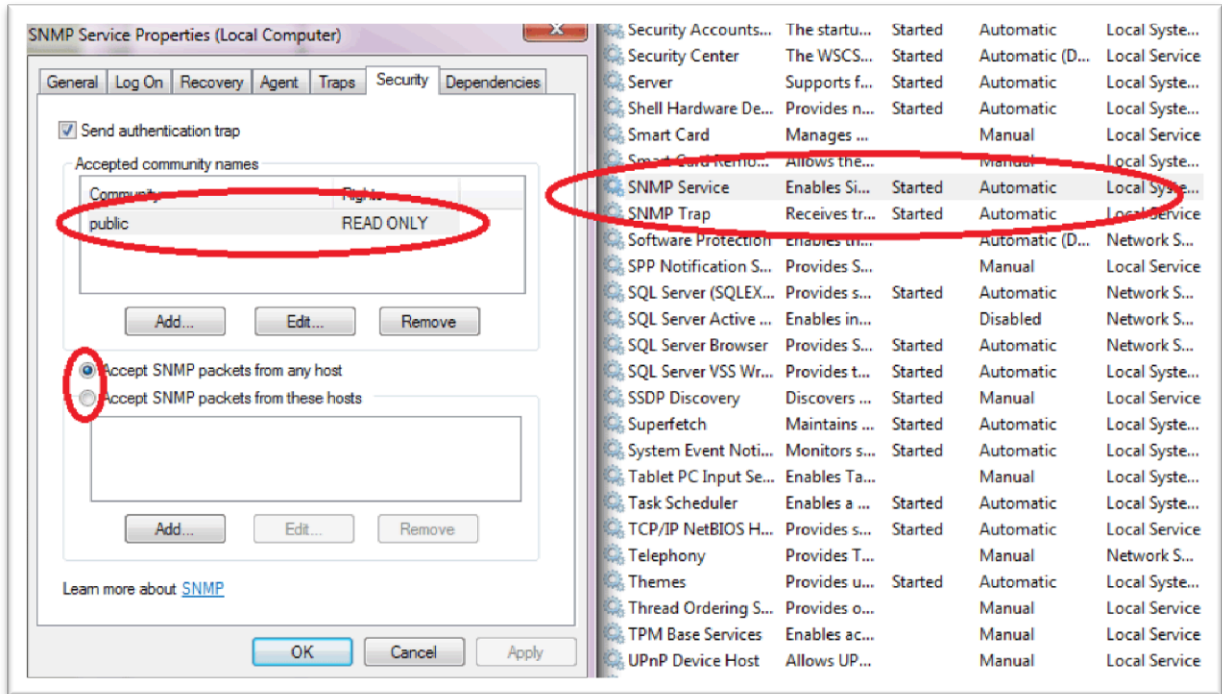
2 features found

	Simple Network Management Protocol (SNMP)	<input checked="" type="checkbox"/>	▼
	WMI SNMP Provider	<input type="checkbox"/>	▼

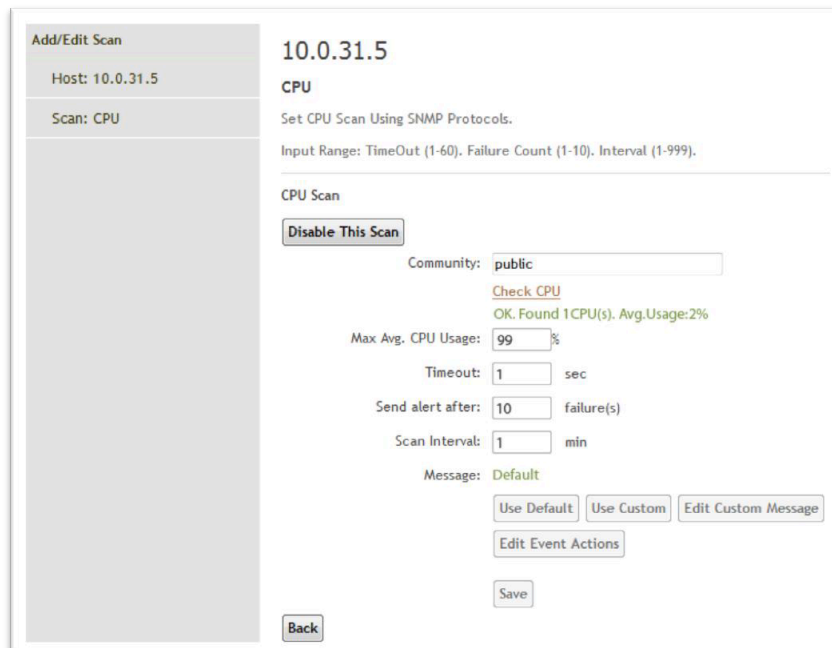
Add (1)

Close

6. Open "Control Panel", and then go to "System and Security" → "Administrative Tools". Double Click "Services".
7. Find "SNMP Service" and make sure this service is started. Double click this service and the Property box will pop up.
8. In the property box, select "Security" Tab. Here you can add "community name" for the SNMP service. To add, click "Add". Set Community rights and community name, and save this setting. The picture is the sample of a setting where it has "public" as community name, and "READ ONLY" as community rights.



9. Now, you can set SNMP monitoring scans in your Site Monster. Enter the community name you added for the machine. Use the "Check" link to see if this works.



7. History Page

In This Page, you can view and download logs. Administrator has System Log also.

On page load, it will show you the latest 100 log lines of the current day. Select the date you want to see on the calendar on the left.

On the window, it can only show you the first or last 100 lines. To see the complete log of a particular date, download logs by clicking the link under the calendar.

If you want to change the log preservation period, go to **"Settings" → "Log Setup" → "Default Log Settings"**.

History

July 2012

Su	Mo	Tu	We	Th	Fr	Sa
	25	26	27	28	29	
1	2	3	4	5	6	7
8	9	10	11	12	13	14
15	16	17	18	19	20	21
22	23	24	25	26	27	28
29	30	31	1	2	3	

Export

Export System Log

Export User Log

Help

History Help

↑ **System Log** ↓

Only displaying first/last 100 lines. For the complete log, please export and download log files from the left column.

```

2012/07/12 00:00:30 [System Finished Running 287 Scans]
2012/07/12 00:01:21 [System Finished Running 294 Scans]
2012/07/12 00:02:32 [System Finished Running 288 Scans]
2012/07/12 00:03:28 [System Finished Running 293 Scans]
2012/07/12 00:04:34 [System Finished Running 288 Scans]
2012/07/12 00:05:21 [System Finished Running 294 Scans]
2012/07/12 00:06:31 [System Finished Running 287 Scans]
2012/07/12 00:07:21 [System Finished Running 294 Scans]
2012/07/12 00:08:33 [System Finished Running 288 Scans]
2012/07/12 00:09:21 [System Finished Running 293 Scans]
2012/07/12 00:10:32 [System Finished Running 288 Scans]
2012/07/12 00:11:29 [System Finished Running 294 Scans]
2012/07/12 00:12:29 [System Finished Running 287 Scans]
2012/07/12 00:13:33 [System Finished Running 294 Scans]
2012/07/12 00:14:28 [System Finished Running 288 Scans]
2012/07/12 00:15:34 [System Finished Running 293 Scans]
2012/07/12 00:16:36 [System Finished Running 288 Scans]
2012/07/12 00:17:26 [System Finished Running 294 Scans]
2012/07/12 00:18:36 [System Finished Running 287 Scans]
                
```

↑ **administrator's Log** ↓

Only displaying first/last 100 lines. For the complete log, please export and download log files from the left column.

```

2012/07/12 12:56:33 [localhost] [Traffic] [OK] OK. Incoming: 68460tets
2012/07/12 12:56:32 [localhost] [SNMP 3] [OK] Device10_Status:OK. OID:
2012/07/12 12:56:32 [localhost] [CPU] [OK] OK. Average CPU Usage: 0%. 4
2012/07/12 12:56:32 [imap.pspinc.com] [PING] [OK] Address:216.230.241.9
2012/07/12 12:56:31 [imap.pspinc.com] [IMAP PORT] [OK] IMAP port(143) i
2012/07/12 12:56:31 [fiftimail-in03.dreamersi.net] [PING] [OK] Address:
2012/07/12 12:56:31 [fiftimail-in02.dreamersi.net] [PING] [OK] Address:
2012/07/12 12:56:31 [fiftimail-in01.dreamersi.net] [PING] [OK] Address:
2012/07/12 12:56:31 [dreamersi.com] [HTTP PORT] [OK] HTTP port(80) is o
2012/07/12 12:56:30 [dreamersi.com] [PING] [OK] Address:216.230.240.214
2012/07/12 12:56:30 [db00.webdearc.com] [PING] [OK] Address:216.230.241
2012/07/12 12:56:30 [bloguru.com] [PING] [OK] Address:216.230.241.185 R
2012/07/12 12:56:30 [as23394-fw.pspinc.com] [PING] [OK] Address:216.230
2012/07/12 12:56:29 [10.0.31.5] [MYSQL 3] [OK] Login:OK SHOW TABLE:OK T
2012/07/12 12:56:29 [10.0.31.5] [PING] [OK] Address:10.0.31.5 RoundTrip
2012/07/12 12:55:39 [10.0.31.5] [MYSQL 3] [OK] Login:OK SHOW TABLE:OK T
2012/07/12 12:55:29 [10.0.31.5] [PING] [OK] Address:10.0.31.5 RoundTrip
2012/07/12 12:54:30 [db00.webdearc.com] [PING] [OK] Address:216.230.241
                
```

8. Monitor Page

In this monitor page, you can monitor all scans 24/7. This page gives you an alert sound on any scans that go into critical state.

This page automatically updates status every minute. For server monitoring, keep opening this page. Other pages will not give alert sound.

Choose display type from: "All Scans", "Critical + Warning", and "Critical Only".

If there are any scans in Critical State, it will play a warning sound repeatedly. To change this warning sound, go to "**Setting**" → "**Alert Sound Setup**".

Monitor Scans				Status Summary			
All Scans				OK	Warning	Critical (Unaware/Total)	All
<input type="button" value="All Scans"/> <input type="button" value="Critical + Warning"/> <input type="button" value="Critical Only"/>				292	1	0/3	296
HostName/IP	MachineName	Test	Status	Last Run	Status Information		
10.0.31.5	V3 MySQL Test	MYSQL 3	10/10	2012/06/25 17:56:54	Login:OK SHOW TABLE:OK Time:10sec		
10.0.31.5	V3 MySQL Test	PING	10/10	2012/06/25 17:54:44	Address:10.0.31.5 RoundTripTime:0ms		
am01.alpha-mail.net	am01	HTTP 1	10/10	2012/06/25 17:56:58	HTTP-Response:OK. Page:http://am01.alpha-mail.net Time:2sec		
am01.alpha-mail.net	am01	HTTP PORT	10/10	2012/06/25 17:56:55	HTTP port(80) is open.		
am01.alpha-mail.net	am01	PING	10/10	2012/06/25 17:56:54	Address:216.230.250.1 RoundTripTime:4ms		
am02.alpha-mail.net	am02	HTTP 1	10/10	2012/06/25 17:57:01	HTTP-Response:OK. Page:http://am02.alpha-mail.net Time:2sec		
am02.alpha-mail.net	am02	HTTP PORT	10/10	2012/06/25 17:56:58	HTTP port(80) is open.		
am02.alpha-mail.net	am02	PING	10/10	2012/06/25 17:56:58	Address:216.230.250.2 RoundTripTime:3ms		
am03.alpha-mail.net	am03	HTTP 1	10/10	2012/06/25 17:57:04	HTTP-Response:OK. Page:http://am03.alpha-mail.net Time:2sec		
am03.alpha-mail.net	am03	HTTP PORT	10/10	2012/06/25 17:57:02	HTTP port(80) is open.		
am03.alpha-mail.net	am03	PING	10/10	2012/06/25 17:57:01	Address:216.230.250.3 RoundTripTime:2ms		
am04.alpha-mail.net	am04	HTTP 1	10/10	2012/06/25 17:57:08	HTTP-Response:OK. Page:http://am04.alpha-mail.net Time:2sec		
am04.alpha-mail.net	am04	HTTP PORT	10/10	2012/06/25 17:57:05	HTTP port(80) is open.		
am04.alpha-mail.net	am04	PING	10/10	2012/06/25 17:57:05	Address:216.230.250.4 RoundTripTime:2ms		
am05.alpha-mail.net	am05	HTTP 1	10/10	2012/06/25 17:57:11	HTTP-Response:OK. Page:http://am05.alpha-mail.net Time:2sec		

Clicking the link on "**(Unaware)**" in the status column of any scans in Critical State will make this to "**(Aware)**", and stop the warning sound. If there are other scans that become Critical State, the warning sound will play again.

Monitor Scans

Critical + Warning

Status Summary

OK	Warning	Critical (Unaware/Total)	All
291	1	1/4	296

All Scans Critical + Warning Critical Only

HostName/IP	MachineName	Test	Status	Last Run	Status Information
localhost	MyComputer	DISK 1	0/10 (Aware)	2012/06/26 10:49:35	A:\:Available Space Low. Size=0MB Used=0MB. DownTime:18d17h28m23s
localhost	MyComputer	MEMORY 5	0/10 (Unaware)	2012/06/26 10:49:36	Physical Memory:Available Space Low. Size=1759MB Used=1393MB. DownTime:0d0h14m59s
localhost	MyComputer	MEMORY 6	0/10 (Aware)	2012/06/26 10:49:36	Could not get Memory information. Error Code:-2000 DownTime:18d17h28m23s
test06.dreamersi.net	V3 DI Web	FTP	0/10 (Aware)	2012/06/26 10:49:47	Write Error: The remote server returned an error: (530) Not logged in. Down Time: 18d17h27m50s
webltw29.alpha-lt.net	webltw29	PING	9/10	2012/06/26 10:49:24	Error:TimedOut

Monitor Scans

Critical + Warning

Status Summary

OK	Warning	Critical (Unaware/Total)	All
291	2	0/3	296

All Scans Critical + Warning Critical Only

HostName/IP	MachineName	Test	Status	Last Run	Status Information
localhost	MyComputer	DISK 1	0/10 (Aware)	2012/06/25 17:54:25	A:\:Available Space Low. Size=0MB Used=0MB. DownTime:18d0h33m13s
localhost	MyComputer	MEMORY 6	0/10 (Aware)	2012/06/25 17:54:26	Could not get Memory information. Error Code:-2000 DownTime:18d0h33m13s
ltpop31.alpha-lt.net	ltpop31	PING	5/6	2012/06/25 17:54:17	Error:TimedOut
test06.dreamersi.net	V3 DI Web	FTP	0/10 (Aware)	2012/06/25 17:53:41	Write Error: The remote server returned an error: (530) Not logged in. Down Time: 18d0h31m45s
webamw01.alpha-mail.net	webamw01	HTTP 1	9/10	2012/06/25 17:53:47	HTTP-Response:The operation has timed out. Page:http://webamw01.alpha-mail.net

Links on Hostname let you jump to the "**Host View**" page of this host.

About Error Codes

Site Monster usually gives you a description of scan error. However, if a scan only returns an error code, refer to the following list.

800	SMTP_RESPONDS_SLOW
810	POP3_RESPONDS_SLOW
820	IMAP_RESPONDS_SLOW
900	ERR_OPEN_SOCKET
901	ERR_INIT_SOCKET
902	ERR_CONNECT
904	ERR_SEND_DATA
905	ERR_RECV_DATA
906	ERR_TIMEOUT
909	ERR_TOOFEWBYTE_REC
910	ERR_TOOFEWBYTE_SND
912	ERR_LOGIN_FTP
63	ERR_OPEN_FILE
61	ERR_WRITE_FILE
62	ERR_READ_FILE
63	ERR_COPY_FILE
64	ERR_DELETE_FILE
952	ERR_SNMP_LIMIT_MEMORY
954	ERR_SNMP_LIMIT_CPU
956	ERR SNMP LIMIT DISK